

## Piktogrami za zaglavlje tablica

**U<sub>m</sub>** Nazivni radni napon

**U<sub>pr</sub>** Primarni napon

1 2  
V 2 pozicije

1 0 2  
V Pozicija vađenja ključa (Sredina)

NC NO El. Parametri kontakata

**N<sub>m</sub>** Zatezni moment

Osnovna izvedba

**m** Masa

**P<sub>n</sub>** Nazivna snaga

**U<sub>sec</sub>** Sekundarni napon

1 0 2  
V 3 pozicije

**REL-ON** Pozicija vađenja ključa

Svjetleće jedinice s LED

**M** Navoj

**IP44** S kućištem IP 44

Zvučni znak

**I<sub>W</sub>** Nazivna snaga

**I<sub>sec</sub>** Sekundarna struja

1 2  
V Pozicija vađenja ključa (Lijeva strana)

**REL-ON** Otvaranje brave: s okretom

Dimenzije

Natične i utične stopice

**IP..** Stupanj zaštite

**IP 65** Stupanj zaštite s prednje strane

**REDACTED** Napomena i dopuna

**P<sub>sec</sub>** Snaga sekundara

1 2  
V Pozicija vađenja ključa (Lijeva ili desna strana)

**REL-ON** Otvaranje brave: s ključem

Tip podnoška

Brtvenevodnice

Boja

## Piktogrami za tehničke parametre

**230/400 V AC** Nazivni napon (V)

**I<sub>e</sub> (AC 1,28 V) 15 A** Nazivna pogonska struja

Pogonska glava je okretna za 90 °!

**x10<sup>6</sup>** Mehanički vijek trajanja

**IP 42** Stupanj zaštite po ugradnji (s prednje strane)

**max. 95** Relativna vlažnost

**U<sub>m</sub> max. 400 V** Nazivni radni napon

**50/60 Hz** Nazivna frekvencija

Pogonska glava i poluga su zakretne za 90 °!

**E +120 °C** Razred toplinske otpornosti

**IP 20** Stupanj zaštite stezaljki (osnovni)

**T<sub>a</sub> -25..+55 °C** Temperatura okoline

**U<sub>i</sub> 660 V** Ui-Nazivni izolacijski napon

**10 A gG** Preporučeni predosigurač

**F<sub>on</sub> max. 20 N** Sila uklapanja

Rasvjetno tijelo sa zaštitom od dodira I. razreda

**IP 55** Stupanj zaštite

**22 mm** Dimenzija izreza

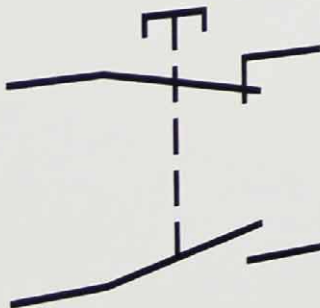
**U<sub>imp</sub> 6 kV** Uimp-Nazivni podnosi- vi udarni napon

**[mm<sup>2</sup>] 0,5-2,5** Max. presjek vodiča

**F<sub>off</sub> max. 15 N** Sila isklapanja

**ON-OFF-ON... x3.600** Učestalost sklapanja/ sat

Otpornost na vibracije





Pozicijske sklopke tipa LS15 2



Pozicijske sklopke tipa LS7 5



Pozicijske sklopke tipa LSME 8



Pozicijske sklopke tipa VP 12



Pozicijske sklopke tipa VT 16



Pozicijske sklopke tipa VM 20



Mikroprekidači tipa KW 24



Jednostavna tipkala 26



Izdignuto tipkalo 26



Svjetleće tipkalo 27



Označeno tipkalo 28



Gijvasto tipkalo 29



Dvostruko, UKL-ISK tipkalo 30



Sklopka s ručicom 30



Sklopka sa svjetlećom ručicom 31



Sklopka s ključem 31



Kontaktna i svjetleća jedinica za NYG(K)3 seriju 32



Kućiče 32



Dopunski dijelovi 34



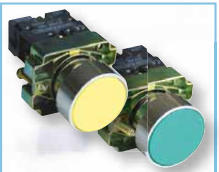
Voltmetri, ampermetri, zvučni indikatori 34



Svjetleći stupovi 35



Signalne svjetiljke s LED 36



Jednostavna tipkala 37



Označena tipkala 38



Gijvasta tipkala s ključem 39



Dvostruka uklopno-isklopna tipkala 40



Sklopke s ručicom 42



Sklopke s ključem 43



Obične signalne žarulje 44



Kontaktni elementi 44



Kućiča 45



Sigurnosne sklopke s relejom 46



Sklopke za uređaje tipa TES 48



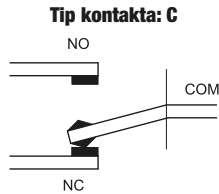
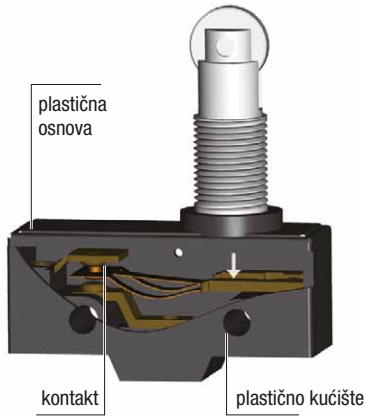
Jednofazni odvojni transformatori tipa TVTR 52



Jednofazni izolacijski transformatori tipa TVTRB 54

**Pozicijske sklopke tipa LS15**

<b>I<sub>th</sub></b> 15 A	<b>I<sub>e</sub></b> (AC 1, 230 V) 5 A	<b>I<sub>e</sub></b> (AC 15, 230 V) 2 A	<b>I<sub>e</sub></b> (DC 15, 250 V) 0,3 A	<b>U<sub>i</sub></b> 500 V	<b>[mm<sup>2</sup>]</b> 0,5-1,5	<b>ON-OFF-ON...</b> sc/h ×1.800	<b>T<sub>a</sub></b> -25...+55°C	<b>IP</b> 00
-------------------------------	---	--	--	-------------------------------	------------------------------------	---------------------------------------	-------------------------------------	-----------------

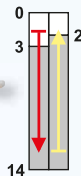


RELEVANT STANDARD  
**EN 60947-1**

RELEVANT STANDARD  
**EN 60947-5-1**

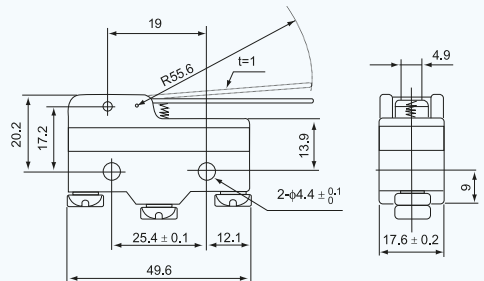
- jaka osnova
- izmjenični kontakt
- spojna točka za okaste stopice
- lagano spajanje vodiča
- s više vrsta sklopnih mehanizama

**Elastična poluga**

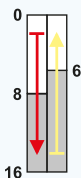


Pogonska staza (mm)

**TRACON LS15GM-B**

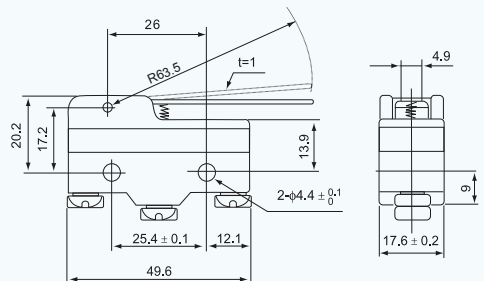


**Elastična poluga**

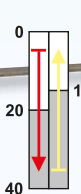


Pogonska staza (mm)

**TRACON LS15GW-B**

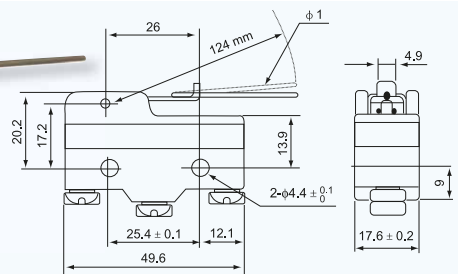


**Elastična poluga**

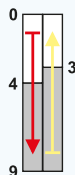


Pogonska staza (mm)

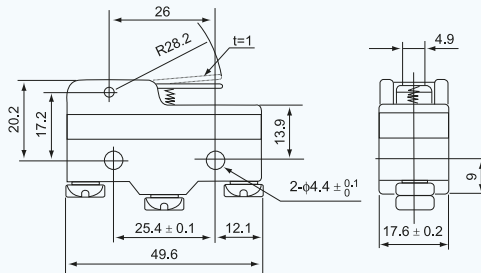
**TRACON LS15HW24-B**



## Elastična poluga

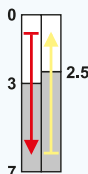


Pogonska staza (mm)

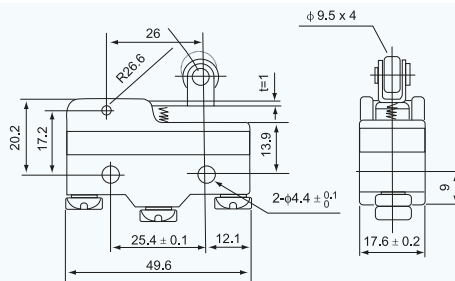


**TRACON** LS15GW21-B

## Elastična poluga s kotačićem

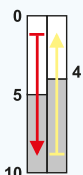


Pogonska staza (mm)

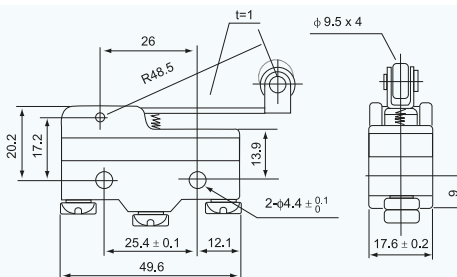


**TRACON** LS15GW22-B

## Elastična poluga s kotačićem

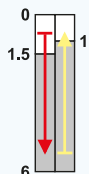


Pogonska staza (mm)

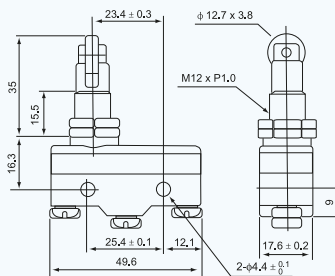


**TRACON** LS15GW2-B

## Izvedba s kotačićem

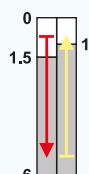


Pogonska staza (mm)

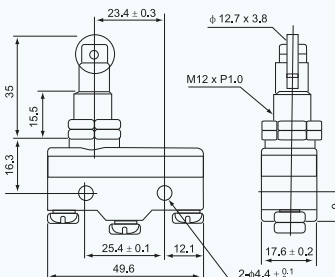


**TRACON**  
LS15GQ21-B

## Izvedba s kotačićem

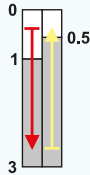


Pogonska staza (mm)



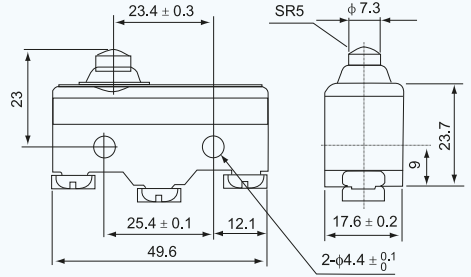
**TRACON**  
LS15GQ22-B

**Klip s okruglim vrhom**

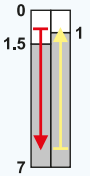


Pogonska staza (mm)

**TRACON LS15GD-B**

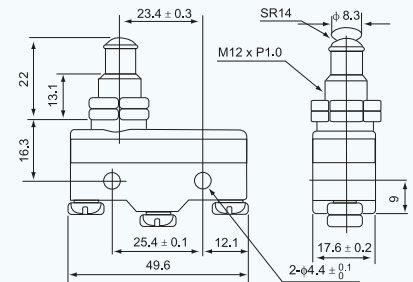


**Klip s okruglim vrhom**

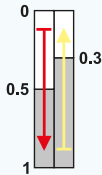


Pogonska staza (mm)

**TRACON LS15GQ-B**

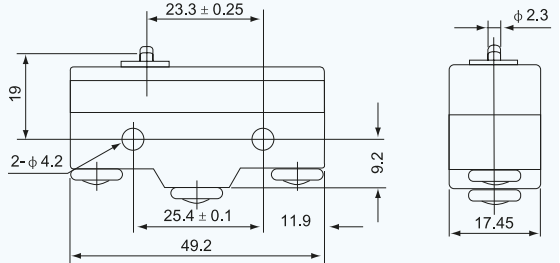


**Izvedba s klipom**



Pogonska staza (mm)

**TRACON LS15G-B**



**Plastično kućište IP40**



IP 40



**TRACON LS15-C0V**



**RELEJI**



## Pozicijske sklopke tipa LS7

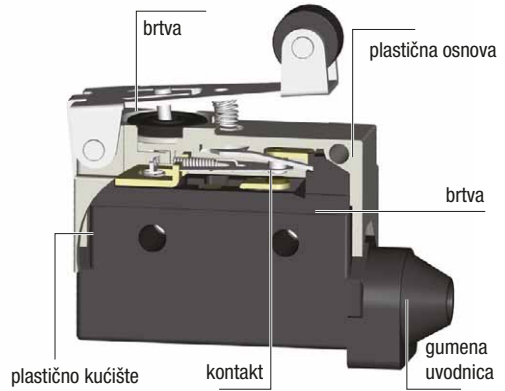
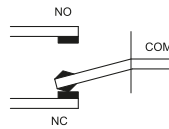
<b>I<sub>th</sub></b> 10 A	<b>I<sub>e</sub></b> (AC 1, 230 V) 5 A	<b>I<sub>e</sub></b> (AC 15, 230 V) 2 A	<b>I<sub>e</sub></b> (DC 13, 250 V) 0,3 A	<b>U<sub>i</sub></b> 500 V	<b>[mm<sup>2</sup>]</b> 0,5-1,5	<b>✂</b> x10 <sup>6</sup>	<b>ON-OFF-ON...</b> sc/h x1.800	<b>T<sub>a</sub></b> -25...+55°C	<b>IP</b> 40	<b>Piktogrami</b>	<b>K/O</b>
-------------------------------	---	--	--	-------------------------------	------------------------------------	------------------------------	---------------------------------------	-------------------------------------	-----------------	-------------------	------------

**RELEVANT STANDARD**  
**EN 60947-1**

**RELEVANT STANDARD**  
**EN 60947-5-1**

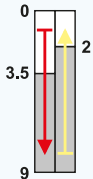


**Tip kontakta: C**

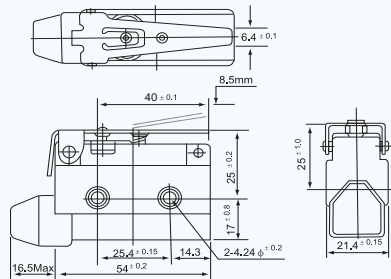


- jaka osnova
- izmjenični kontakt
- spojna točka za okaste stopice
- lagano spajanje vodiča
- s više vrsta sklopkih mehanizama

### Elastična poluga

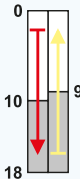


**Pogonska staza (mm)**

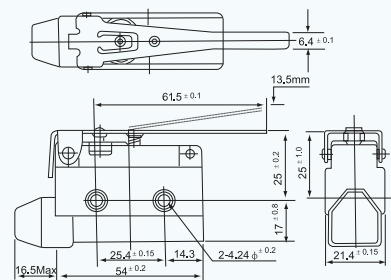


**TRACON LS7140**

### Elastična poluga

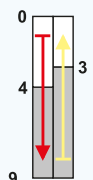


**Pogonska staza (mm)**

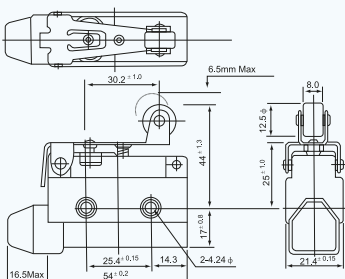


**TRACON LS7120**

### Elastična poluga s kotačićem

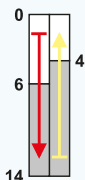


**Pogonska staza (mm)**



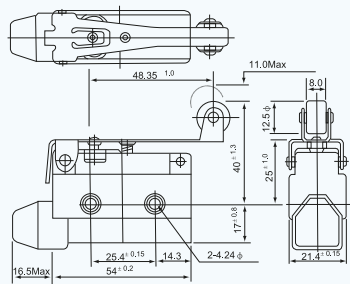
**TRACON LS7141**

**Elastična poluga s kotačićem**

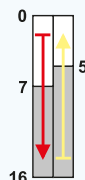


Pogonska staza (mm)

**TRACON LS7121**

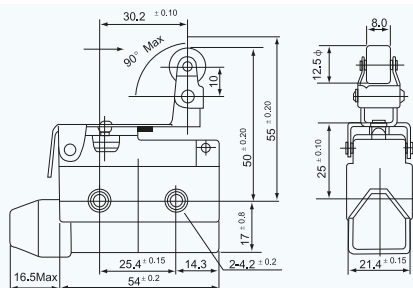


**Poluga s kotačićem na zglobu**

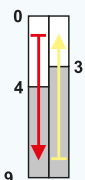


Pogonska staza (mm)

**TRACON LS7144**

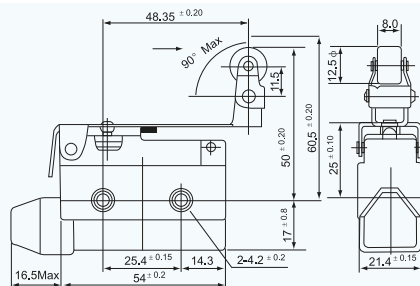


**Poluga s kotačićem na zglobu**

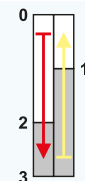


Pogonska staza (mm)

**TRACON LS7124**

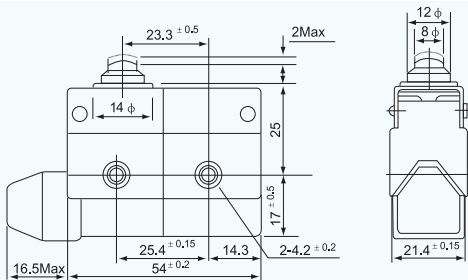


**Klip s okruglim vrhom**

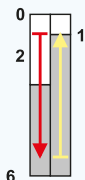


Pogonska staza (mm)

**TRACON LS7100**

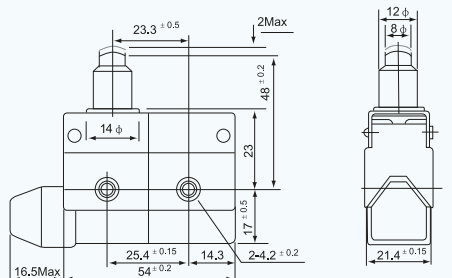


**Klip s okruglim vrhom**

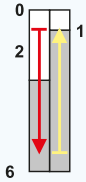


Pogonska staza (mm)

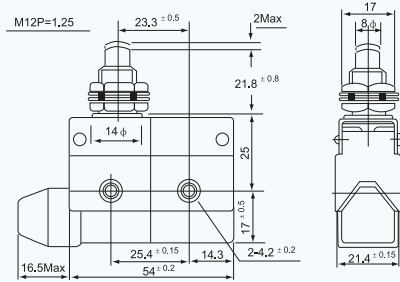
**TRACON LS7110**



## Klip s okruglim vrhom

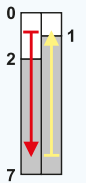


Pogonska staza (mm)

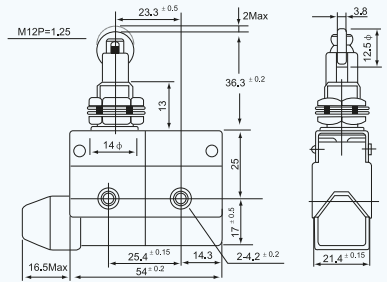


**TRACON** LS7310

## Izvedba s kotačićem

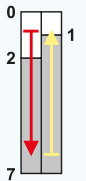


Pogonska staza (mm)

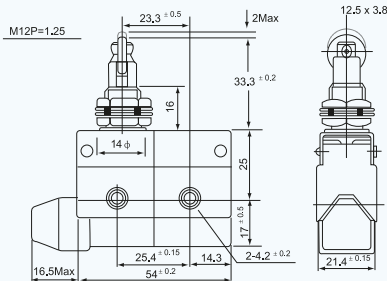


**TRACON** LS7311

## Izvedba s kotačićem

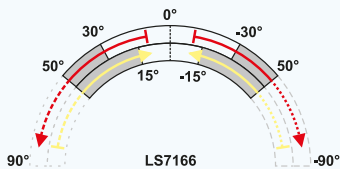


Pogonska staza (mm)

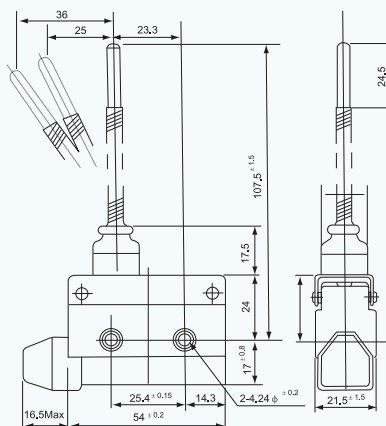


**TRACON** LS7312

## Štap s oprugom



Pogonska staza (°)

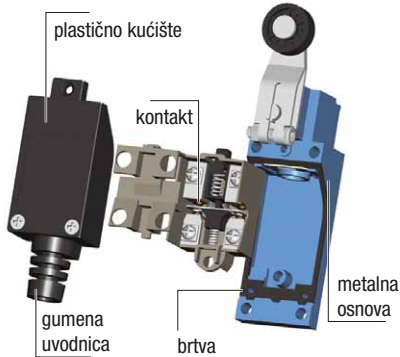


**TRACON** LS7166

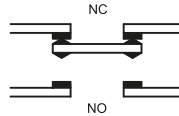


**Pozicijske sklopke tipa LSME**

<b>I<sub>th</sub></b> 10 A	<b>I<sub>e</sub></b> (AC 1, 230 V) 5 A	<b>I<sub>e</sub></b> (AC 16, 230 V) 2 A	<b>I<sub>e</sub></b> (DC 13, 230V) 0,3 A	<b>U<sub>i</sub></b> 500 V	<b>mm<sup>2</sup></b> 0,5-1,5	<b>ON-OFF-ON...</b> sc/h ×1.800	<b>T<sub>a</sub></b> -25...+55°C	<b>IP</b> 65
-------------------------------	---	--	---	-------------------------------	----------------------------------	---------------------------------------	-------------------------------------	-----------------



**Tip kontakta: Za**



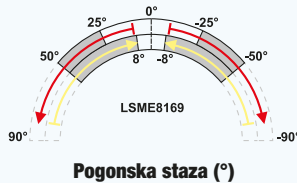
RELEVANT STANDARD  
**EN 60947-1**

RELEVANT STANDARD  
**EN 60947-5-1**

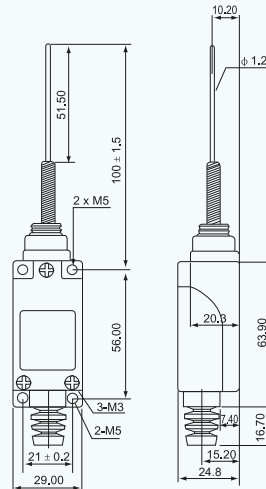
- Dvostruki kontakti
- Masivna konstrukcija
- Plastični i aluminijski odljevak
- Otporne na vodu i ulje

- Dvostruki opružni mehanizam
- Dugi vijek trajanja
- Lagano spajanje vodiča

**Izvedba s elastičnim čeličnim štapićem**



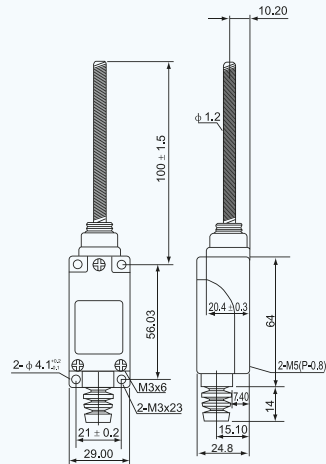
**TRACON LSME8169**



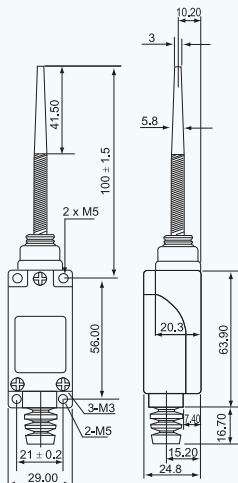
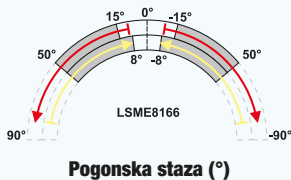
**Izvedba s elastičnim čeličnim štapićem**



**TRACON LSME9101**

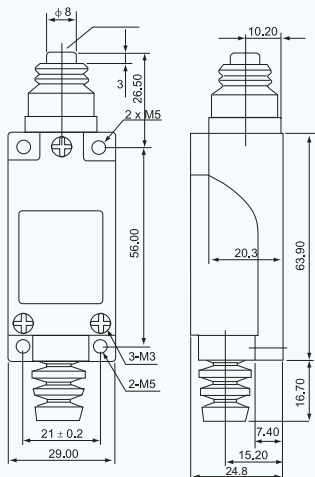
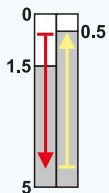


## Izvedba s elastičnim čeličnim štapićem



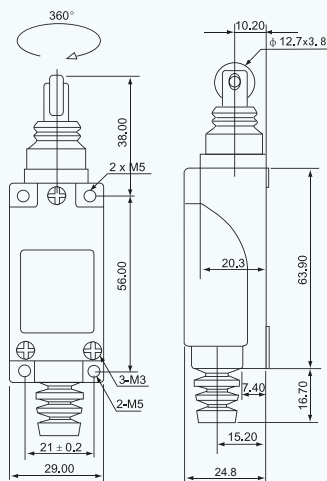
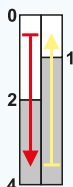
**TRACON LSME8166**

## Klip s okruglim vrhom



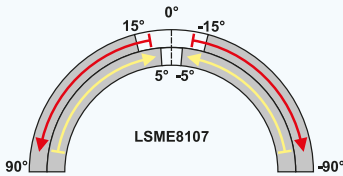
**TRACON LSME8111**

## Klip s kotačićem



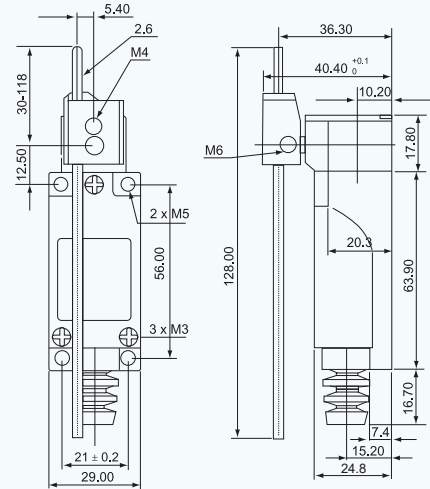
**TRACON LSME8122**

Šipkasta poluga

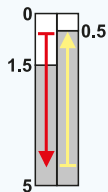


Pogonska staza (°)

**TRACON** LSME8107

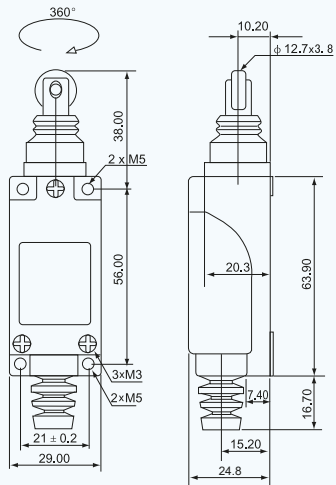


Klip s kotačićem

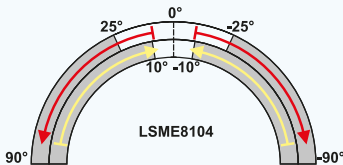


Pogonska staza (mm)

**TRACON** LSME8112

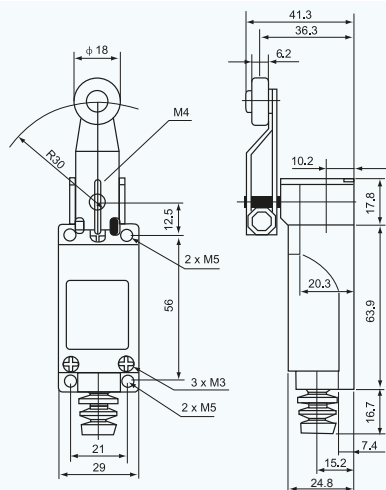


Zakretna poluga s kotačićem

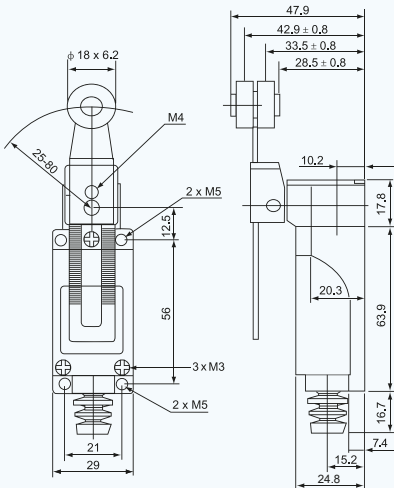
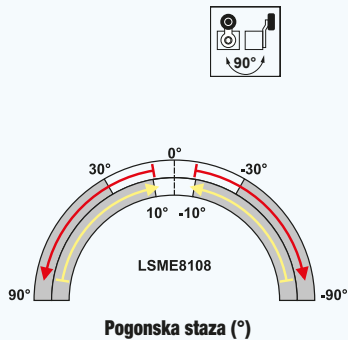


Pogonska staza (°)

**TRACON** LSME8104



Podesiva zakretna poluga s kotačićem



TRACON LSME8108

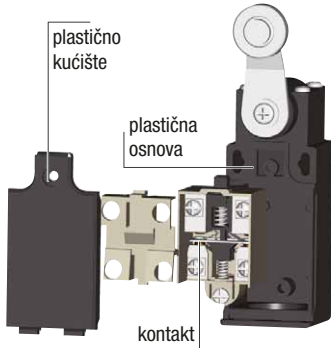
STL...



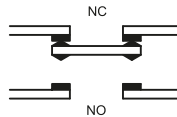
LED  
RUČNE  
SVJETILJKE

**Pozicijske sklopke tipa VP**

<b>I<sub>th</sub></b> 10 A	<b>I<sub>e</sub></b> (AC 1, 230 V) 5 A	<b>I<sub>e</sub></b> (AC 15, 230 V) 2 A	<b>I<sub>e</sub></b> (DC 15, 250 V) 0,3 A	<b>U<sub>i</sub></b> 500 V	<b>[mm<sup>2</sup>]</b> 0,75-1,5	<b>5x10<sup>6</sup></b>	<b>ON-OFF-ON...</b> sc/h ×1.800	<b>T<sub>a</sub></b> -25...+55°C	<b>IP</b> 65
-------------------------------	---	--	--	-------------------------------	-------------------------------------	-------------------------	---------------------------------------	-------------------------------------	-----------------



**Tip kontakta: Za**

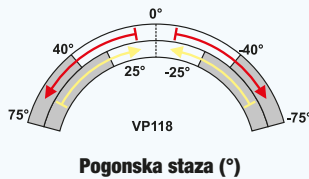
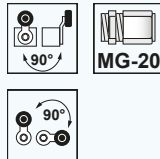


- Dvostruki kontakti
- Jako plastično kućište
- Masivna konstrukcija
- Precizno sklapanje
- Dugi vijek trajanja
- Lagano spajanje vodiča

RELEVANT STANDARD  
**EN 60947-5-1**

RELEVANT STANDARD  
**EN 60947-1**

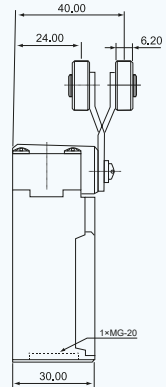
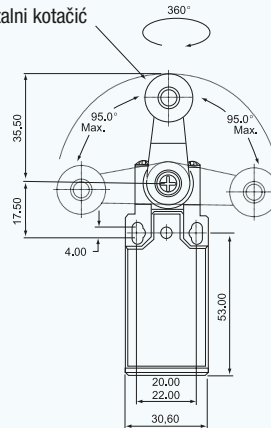
**Zakretna poluga s kotačićem**



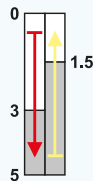
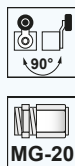
Pogonska staza (°)

**TRACON VP118**

d = 18 mm  
metalni kotačić



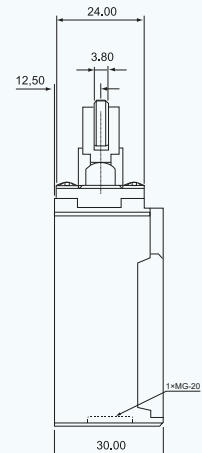
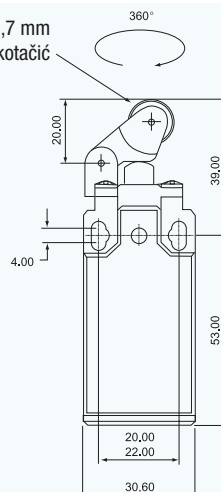
**Zakretna poluga s kotačićem**



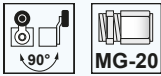
Pogonska staza (mm)

**TRACON VP121**

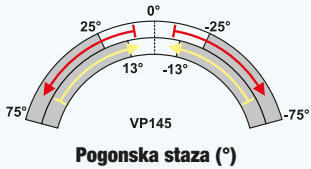
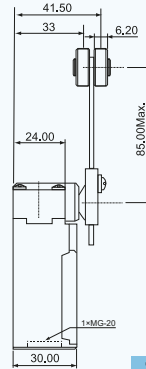
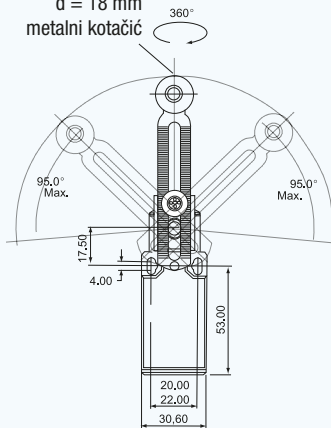
d = 12,7 mm  
metalni kotačić



**Podesiva zakretna poluga s kotačićem**



d = 18 mm  
metalni kotačić

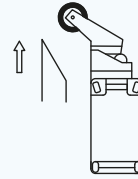
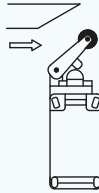
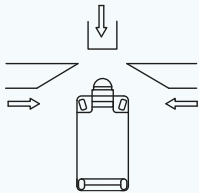


**Pogonska staza (°)**



**TRACON VP145**

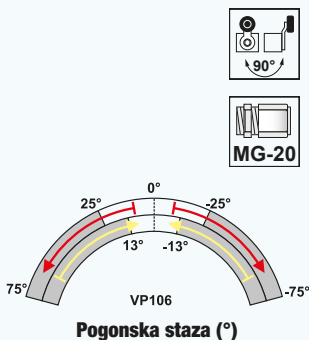
**Pogonski smjerovi**



# TGE

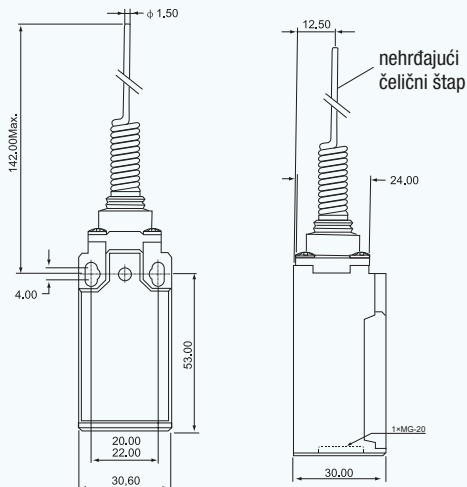
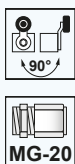
## RAZVODNI ORMARI

Štap s oprugom

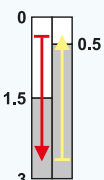
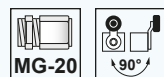


Pogonska staza (°)

TRACON VP106

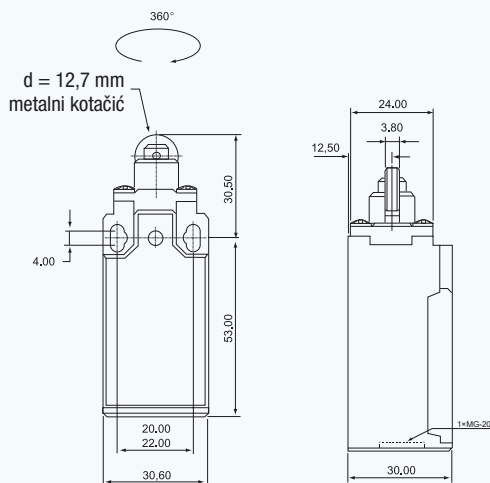


Klip s kotačićem

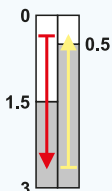
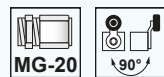


Pogonska staza (mm)

TRACON VP102

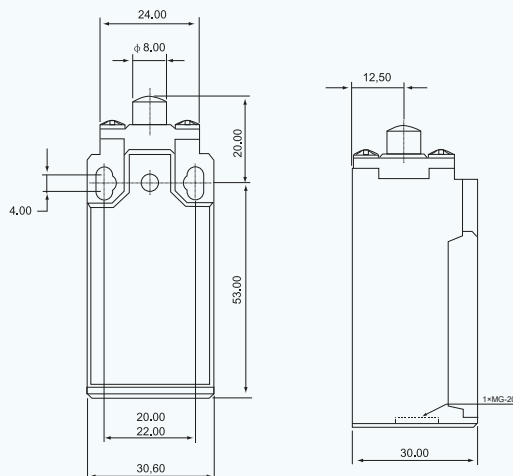


Klip s okruglim vrhom



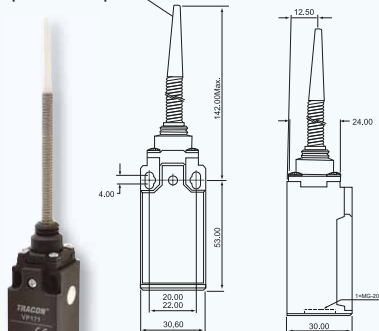
Pogonska staza (mm)

TRACON VP110



## Elastična poluga (plastika+čelik)

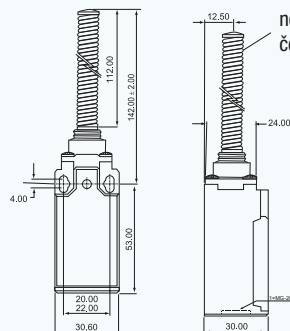
plastični štapić



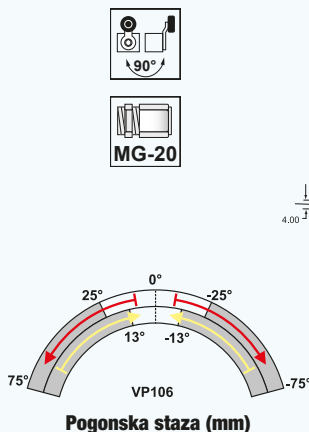
**TRACON VP171**

## Elastična poluga (čelik)

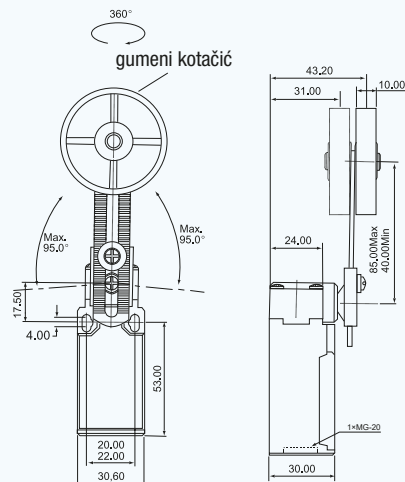
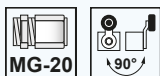
nehrdajući čelični štاپ



**TRACON VP181**

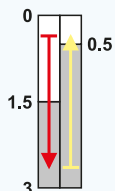
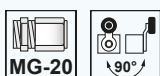


## Izvedba s gumenim kotačićem

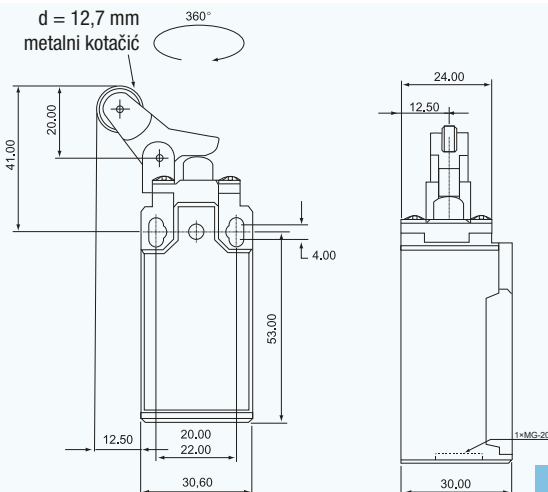


**TRACON VP191**

## Izvedba sa zakretnom polugom



**Pogonska staza (mm)**

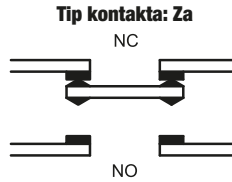
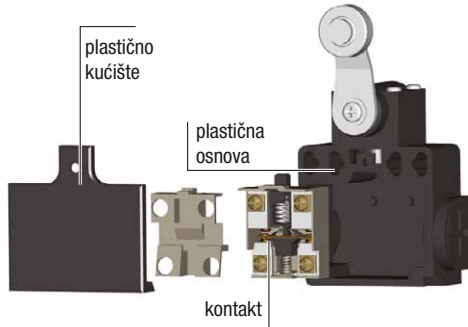


**TRACON VP127**



**Pozicijske sklopke tipa VT**

<b>I<sub>th</sub></b> 10 A	<b>I<sub>e</sub></b> (AC 1, 230 V) 5 A	<b>I<sub>e</sub></b> (AC 16, 230 V) 2 A	<b>I<sub>e</sub></b> (DC 15, 230 V) 0,3 A	<b>U<sub>i</sub></b> 500 V	<b>[mm<sup>2</sup>]</b> 0,75-1,5	<b>ON-OFF-ON...</b> sc/h ×1.800	<b>T<sub>a</sub></b> -25...+55°C	<b>IP</b> 65
-------------------------------	---	--	--	-------------------------------	-------------------------------------	---------------------------------------	-------------------------------------	-----------------

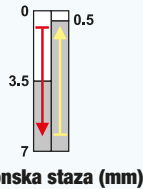
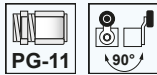


RELEVANT STANDARD  
**EN 60947-1**

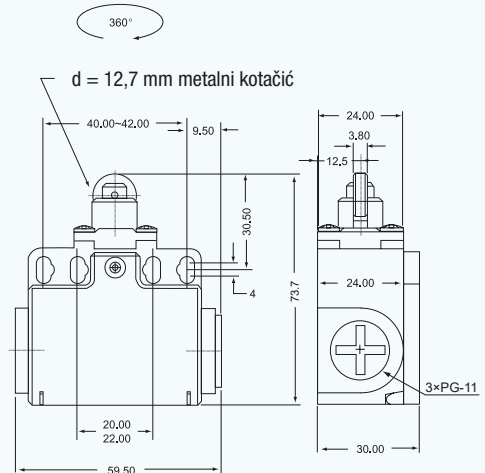
RELEVANT STANDARD  
**EN 60947-5-1**

- Dvostruki kontakti
- Jako plastično kućište
- Masivna konstrukcija
- Precizno sklapanje
- Dugi vijek trajanja

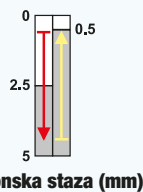
**Klip s kotačićem**



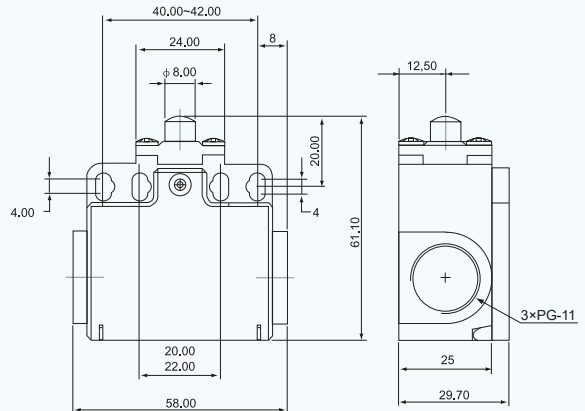
**TRACON VT102**



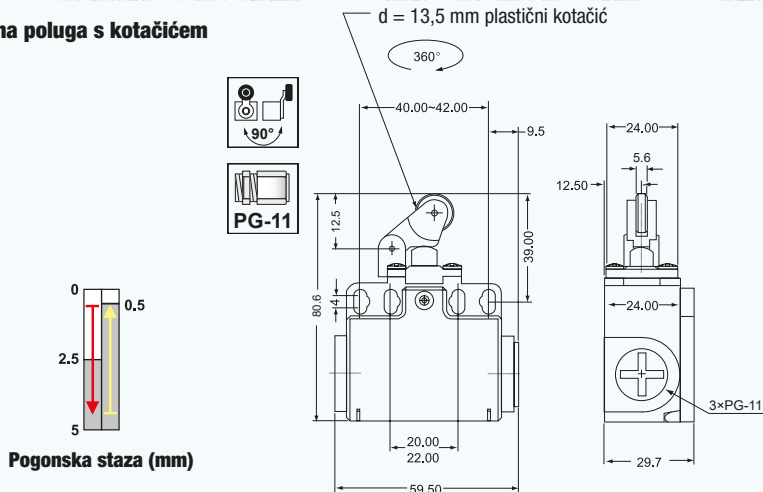
**Klip s okruglim vrhom**



**TRACON VT110**

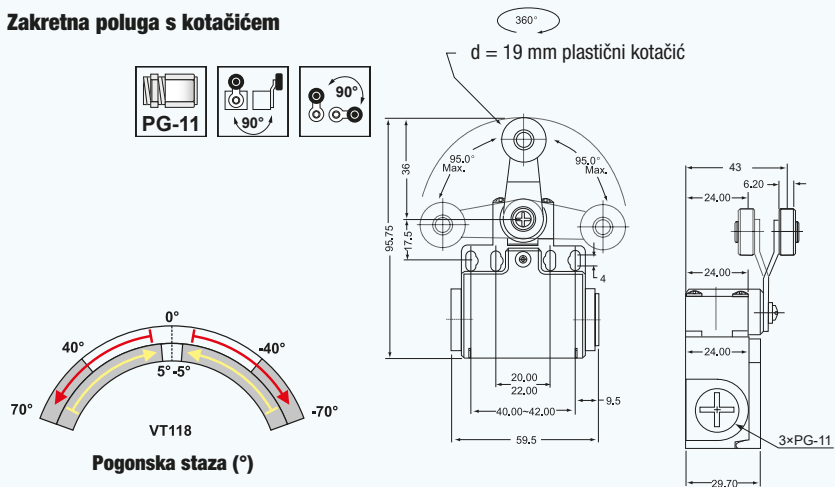


## Zakretna poluga s kotačićem



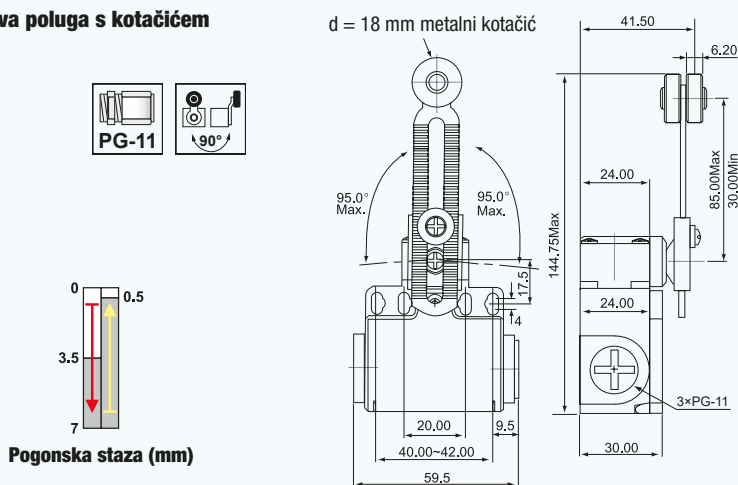
**TRACON VT121**

## Zakretna poluga s kotačićem



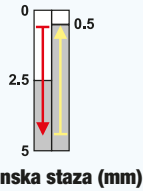
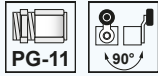
**TRACON VT118**

## Podesiva poluga s kotačićem



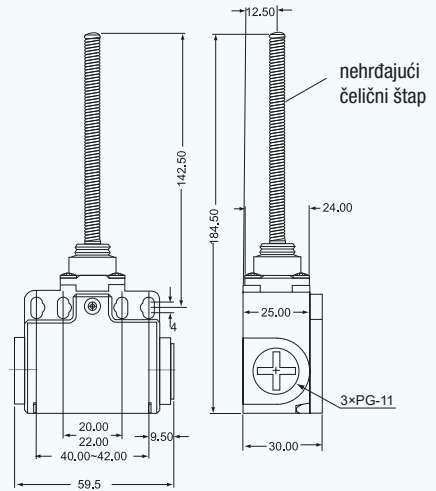
**TRACON VT145**

Elastična poluga

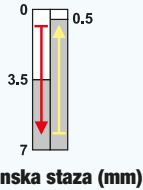
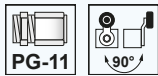


Pogonska staza (mm)

**TRACON** VT181

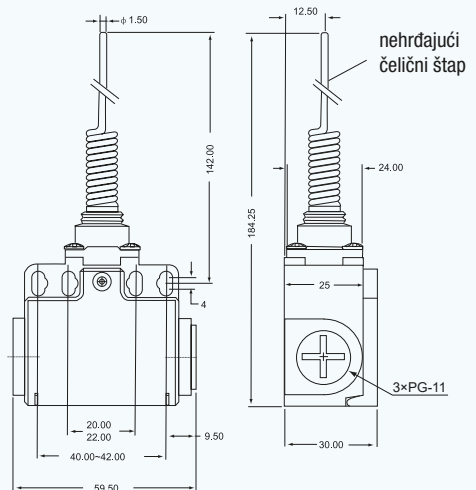


Elastični štapić

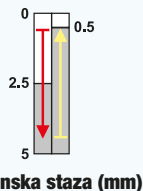


Pogonska staza (mm)

**TRACON** VT106

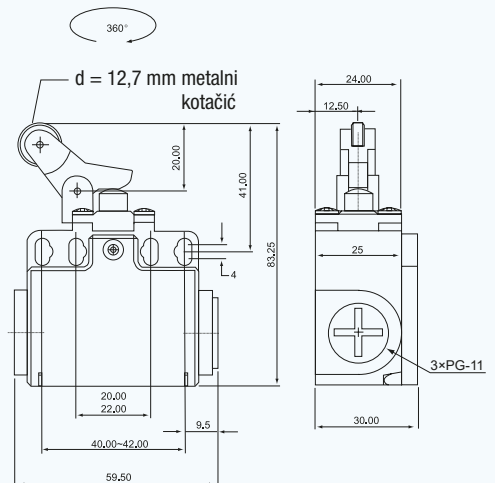


Zakretna poluga s kotačićem

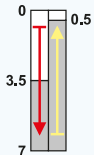
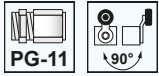


Pogonska staza (mm)

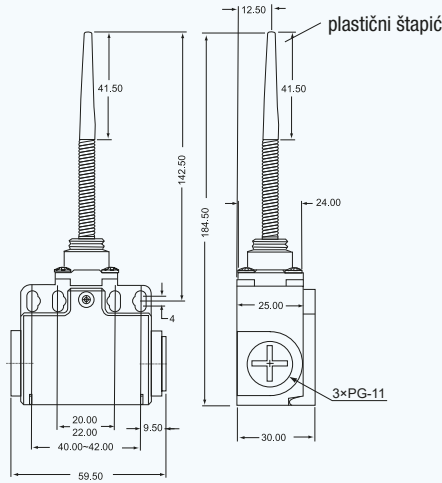
**TRACON** VT127



**Elastični plastični štapić**

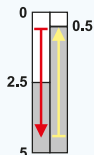
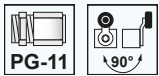


**Pogonska staza (mm)**

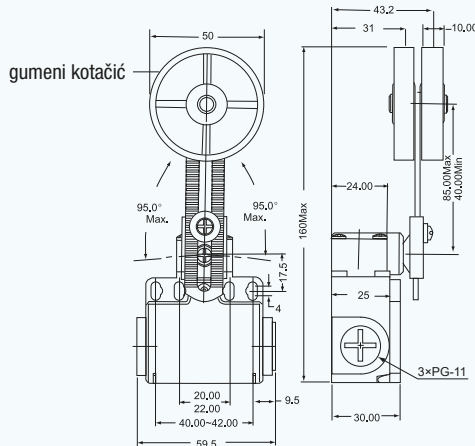


**TRACON VT171**

**Izvedba s gumenim kotačićem**



**Pogonska staza (mm)**



**TRACON VT191**

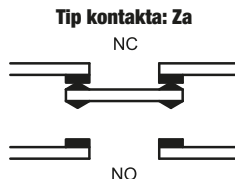
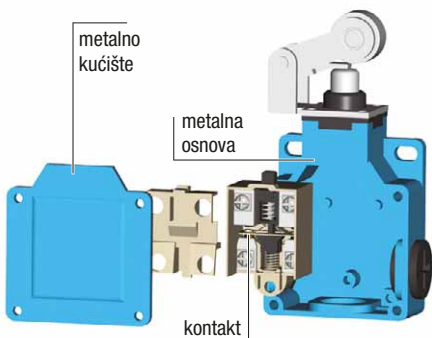
**MP**

**PLOMBE ZA OZNAČAVANJE  
I MJERNE PLOMBE**



## Pozicijske sklopke tipa VM

<b>I<sub>th</sub></b> 10 A	<b>I<sub>e</sub></b> (AC 1, 230 V) 5 A	<b>I<sub>e</sub></b> (AC 15, 230 V) 2 A	<b>I<sub>e</sub></b> (DC 15, 250 V) 0,3 A	<b>U<sub>i</sub></b> 500 V	<b>[mm<sup>2</sup>]</b> 0,75-1,5	<b>5x10<sup>6</sup></b>	<b>ON-OFF-ON...</b> sc/h x3.600	<b>T<sub>a</sub></b> -25...+55°C	<b>IP 66</b>	
-------------------------------	---	--	--	-------------------------------	-------------------------------------	-------------------------	---------------------------------------	-------------------------------------	--------------	--

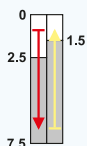
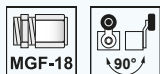


RELEVANT STANDARD  
**EN 60947-1**

RELEVANT STANDARD  
**EN 60947-5-1**

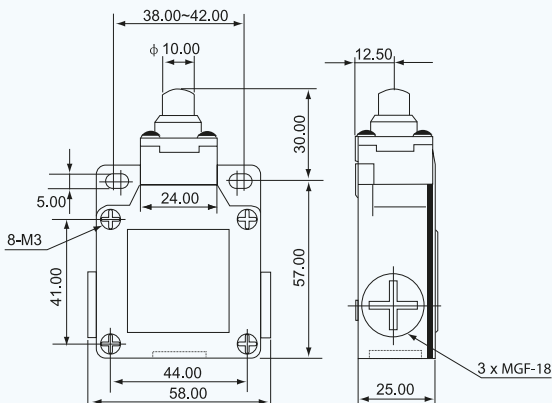
- Dvostruki kontakti
- Jako metalno kućište
- Masivna konstrukcija
- Otporne na vodu i ulje
- Dugi vijek trajanja
- Lagano spajanje vodiča

### Klip s okruglim vrhom

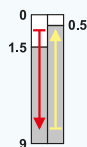
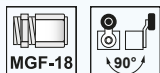


Pogonska staza (mm)

**TRACON VM110**

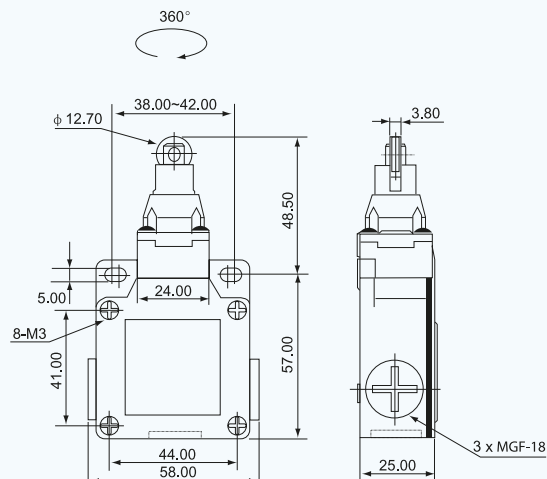


### Klip s kotačićem

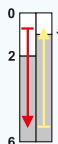
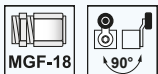


Pogonska staza (mm)

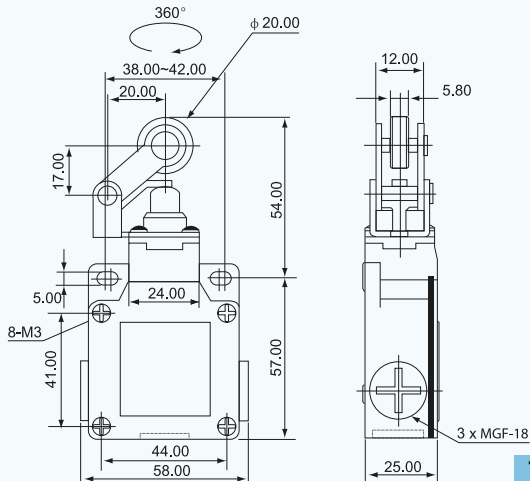
**TRACON VM102**



## Klip i poluga s kotačićem

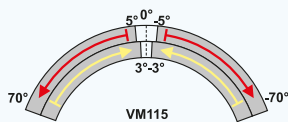
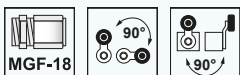


Pogonska staza (mm)

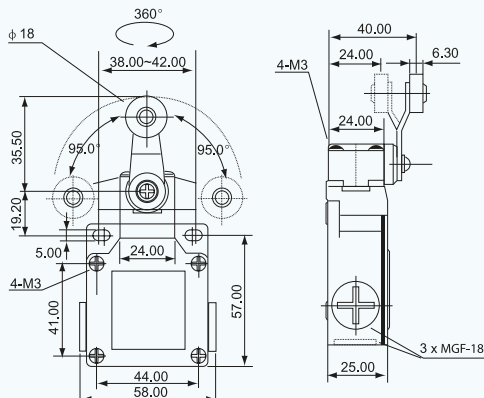


TRACON VM121

## Zakretna poluga s kotačićem

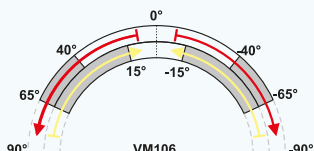
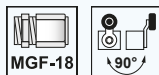


Pogonska staza (°)

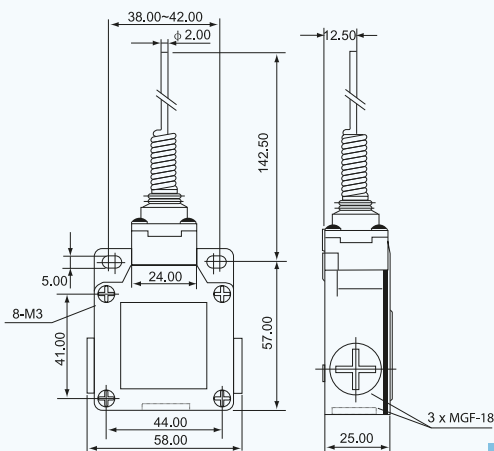


TRACON VM115

## Štap s oprugom

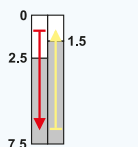
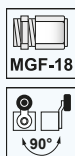


Pogonska staza (°)



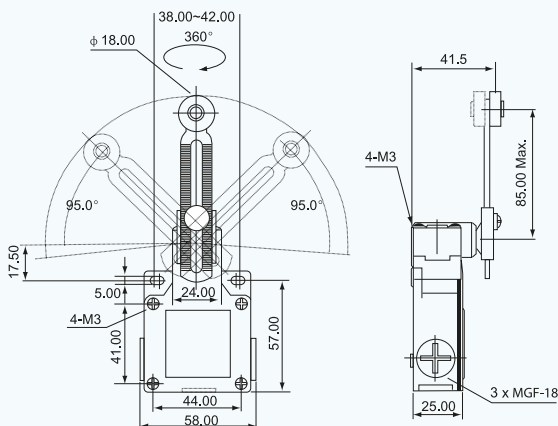
TRACON VM106

**Podesiva poluga s kotačićem**

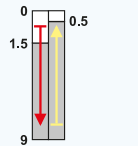
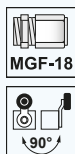


Pogonska staza (mm)

**TRACON VM145**

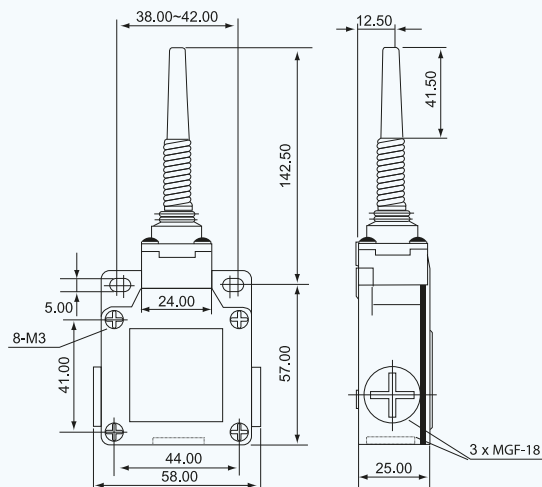


**Elastični plastični štapić**

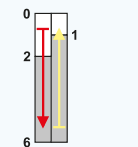
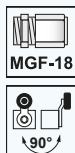


Pogonska staza (mm)

**TRACON VM171**

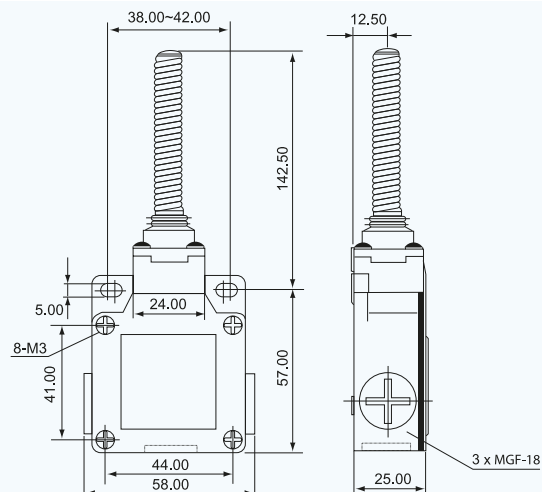


**Elastična poluga**



Pogonska staza (mm)

**TRACON VM181**



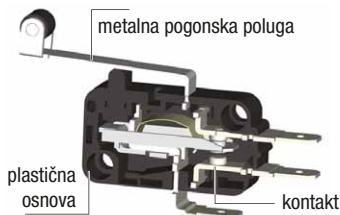
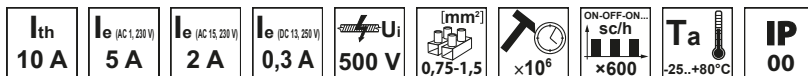
TRACON  
HARMONY

BOŽIČNA  
DEKORACIJA

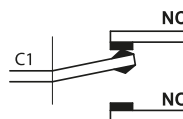




## Mikroprekidači tipa KW



Tip kontakta: C



RELEVANT STANDARD  
EN 60947-1

RELEVANT STANDARD  
EN 60947-5-1

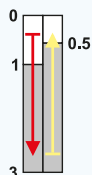
### Izvedba s klipom



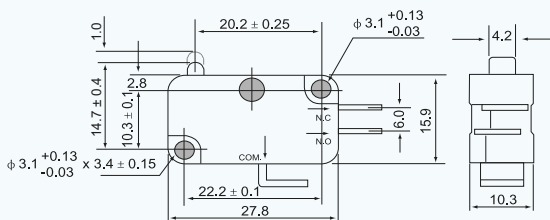
TRACON



**KW3-01** 6,3×0,8 mm  
**KW3-05** 4,8×0,5 mm



Pogonska staza (mm)



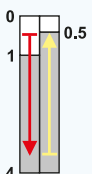
### Elastična poluga



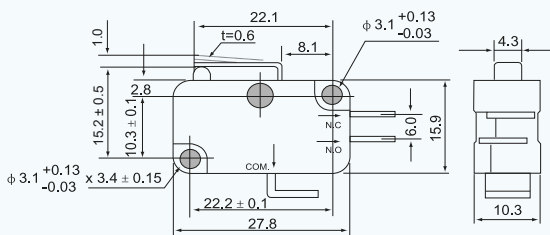
TRACON



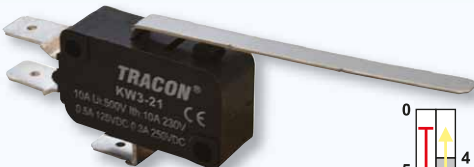
**KW3-11** 6,3×0,8 mm  
**KW3-15** 4,8×0,5 mm



Pogonska staza (mm)



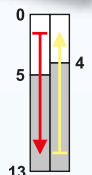
### Elastična poluga



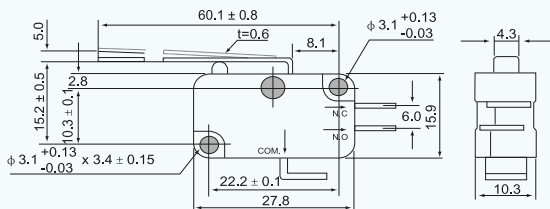
TRACON



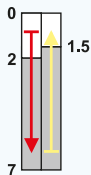
**KW3-21** 6,3×0,8 mm  
**KW3-25** 4,8×0,5 mm



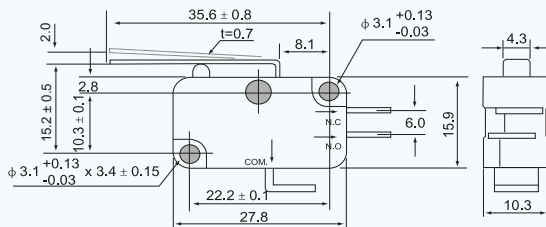
Pogonska staza (mm)



## Elastična poluga



Pogonska staza (mm)



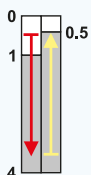
**TRACON**



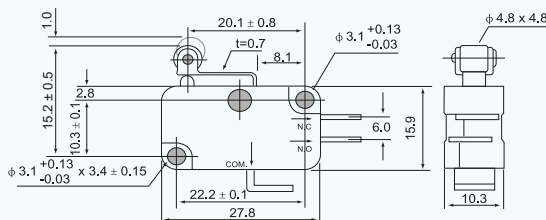
**KW3-31** 6,3×0,8 mm

**KW3-35** 4,8×0,5 mm

## Elastična poluga s kotačićem



Pogonska staza (mm)



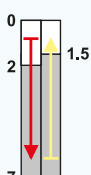
**TRACON**



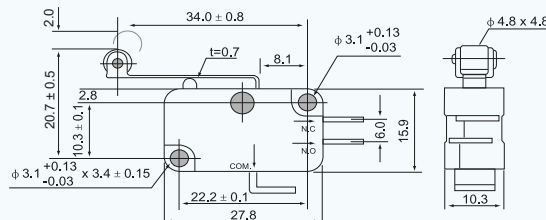
**KW3-41** 6,3×0,8 mm

**KW3-45** 4,8×0,5 mm

## Elastična poluga s kotačićem



Pogonska staza (mm)



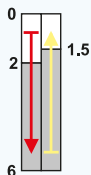
**TRACON**



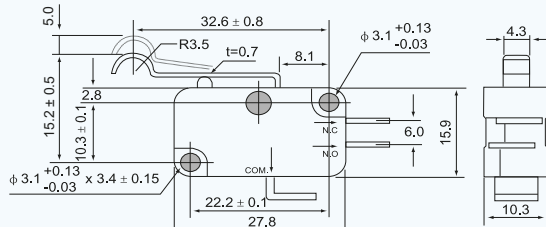
**KW3-51** 6,3×0,8 mm

**KW3-55** 4,8×0,5 mm

## Elastična poluga



Pogonska staza (mm)



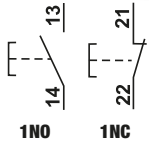
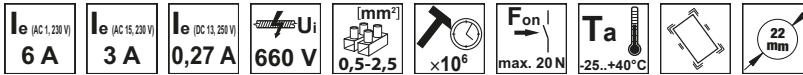
**TRACON**



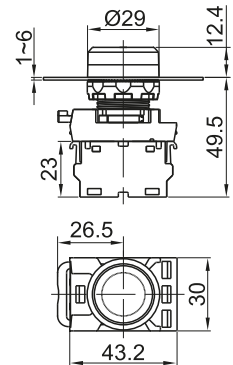
**KW3-61** 6,3×0,8 mm

**KW3-65** 4,8×0,5 mm

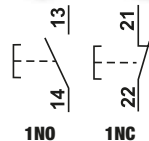
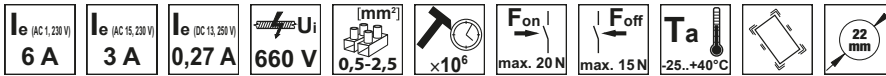
## Jednostavna tipkala



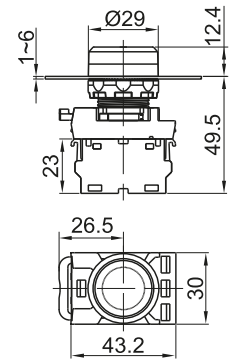
<b>TRACON</b>		IP 65	IP65	NC NO
<b>NYG3-BK</b>		page K/32	1 × NO	
<b>NYG3-G</b>			1 × NO	
<b>NYG3-W</b>			1 × NO	
<b>NYG3-Y</b>			1 × NO	
<b>NYG3-B</b>			1 × NO	
<b>NYG3-R</b>			1 × NC	
<b>RELEVANT STANDARD</b>		<b>RELEVANT STANDARD</b>		
<b>EN 60947-1</b>		<b>EN 60947-5-1</b>		



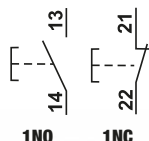
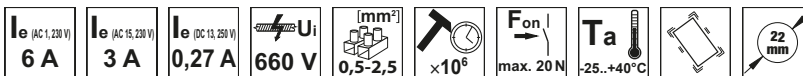
## Jednostavna sklopka



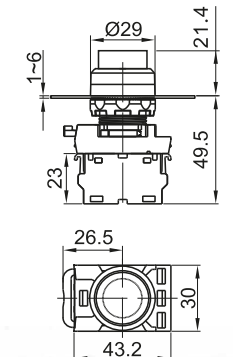
<b>TRACON</b>		IP 65	IP65	NC NO
<b>NYK3-BK</b>		page K/32	1 × NO	
<b>NYK3-G</b>			1 × NO	
<b>NYK3-W</b>			1 × NO	
<b>NYK3-Y</b>			1 × NO	
<b>NYK3-B</b>			1 × NO	
<b>NYK3-R</b>			1 × NC	
<b>RELEVANT STANDARD</b>		<b>RELEVANT STANDARD</b>		
<b>EN 60947-1</b>		<b>EN 60947-5-1</b>		



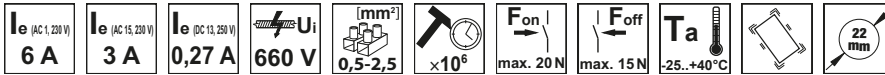
## Izdignuto tipkalo



<b>TRACON</b>		IP 42	IP42	NC NO
<b>NYG3-HBK</b>		page K/32	1 × NO	
<b>NYG3-HG</b>			1 × NO	
<b>NYG3-HW</b>			1 × NO	
<b>NYG3-HY</b>			1 × NO	
<b>NYG3-HB</b>			1 × NO	
<b>NYG3-HR</b>			1 × NC	
<b>RELEVANT STANDARD</b>		<b>RELEVANT STANDARD</b>		
<b>EN 60947-1</b>		<b>EN 60947-5-1</b>		



## Izdignuta sklopka



**TRACON**

IP 42

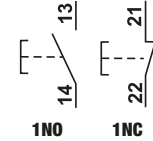
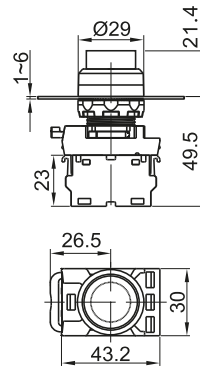
IP42

NC  
NO

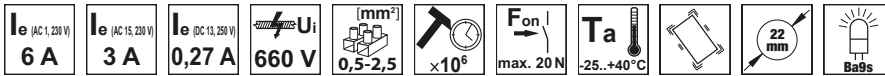
NYK3-HBK		1 × NO
NYK3-HG		1 × NO
NYK3-HW	page	1 × NO
NYK3-HY	K/32	1 × NO
NYK3-HB		1 × NO
NYK3-HR		1 × NC

RELEVANT STANDARD  
**EN 60947-1**

RELEVANT STANDARD  
**EN 60947-5-1**



## Svjetleće tipkala



**TRACON**

IP 65

IP65

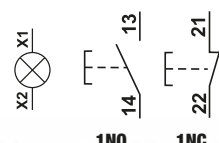
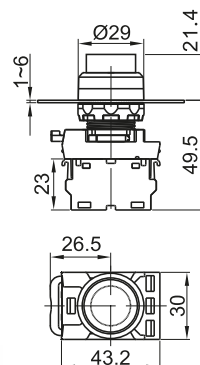
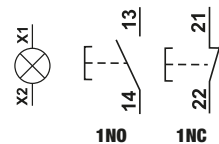
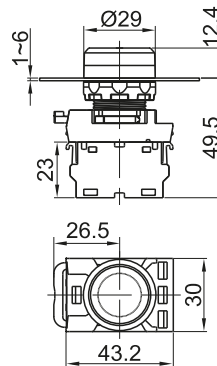
NC  
NO

NYG3-LG		1 × NO
NYG3-LW		1 × NO
NYG3-LY		1 × NO
NYG3-LB		1 × NO
NYG3-LR	page	1 × NC
NYG3-HLG*	K/32	1 × NO
NYG3-HLW*		1 × NO
NYG3-HLY*		1 × NO
NYG3-HLB*		1 × NO
NYG3-HLR*		1 × NC

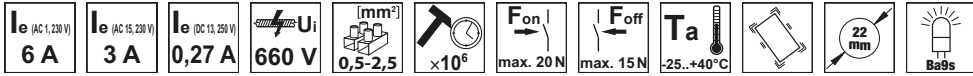
\* Izbočena izvedba

RELEVANT STANDARD  
**EN 60947-1**

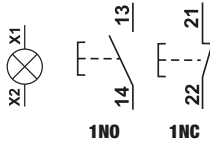
RELEVANT STANDARD  
**EN 60947-5-1**



## Svjetleća sklopka



NYK3-L.

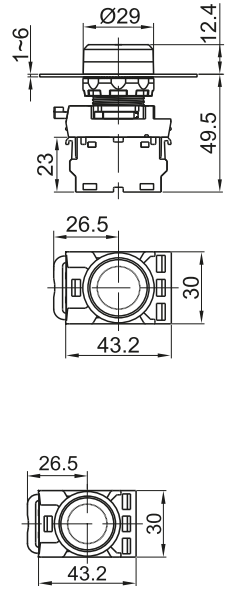
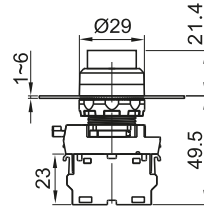


NYK3-H.

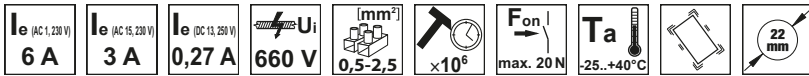
TRACON		IP 65	IP65	NC NO
NYK3-LG			1 × NO	
NYK3-LW			1 × NO	
NYK3-LY			1 × NO	
NYK3-LB			1 × NO	
NYK3-LR			1 × NC	
NYK3-HLG*			1 × NO	
NYK3-HLW*			1 × NO	
NYK3-HLY*			1 × NO	
NYK3-HLB*			1 × NO	
NYK3-HLR*			1 × NC	

\* Izbočena izvedba (IP42)

RELEVANT STANDARD EN 60947-1
RELEVANT STANDARD EN 60947-5-1



## Označeno tipkalo

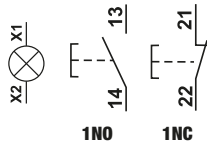


NYG3-P.

TRACON		IP 65	IP65	NC NO
NYG3-P1	↑		1 × NO	
NYG3-P4	→		1 × NO	
NYG3-P3	←		1 × NO	
NYG3-P2	○		1 × NC	
NYG3-P1L	↑		1 × NO	
NYG3-P4L	→		1 × NO	
NYG3-P3L	←		1 × NO	
NYG3-P2L	○		1 × NC	

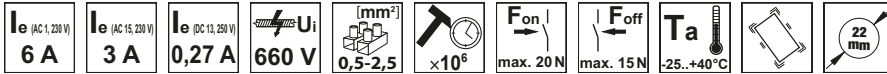


NYG3-P.L.



K/32

## Označeno tipkalo



**TRACON**

IP 65

IP65

NC  
NO

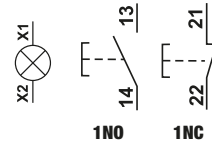
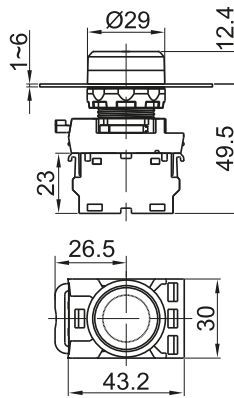
NYK3-P1	—	1 × NO
NYK3-P4	→	1 × NO
NYK3-P3	→	1 × NO
NYK3-P2	○	1 × NC
NYK3-P1L	—	1 × NO
NYK3-P4L	→	1 × NO
NYK3-P3L	→	1 × NO
NYK3-P2L	○	1 × NC

page K/32

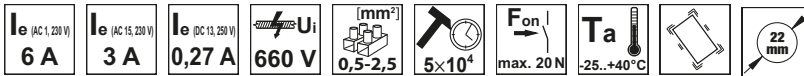
Ba9s

**RELEVANT STANDARD EN 60947-1**

**RELEVANT STANDARD EN 60947-5-1**



## Gljivasto tipkalo



**TRACON**

IP 65

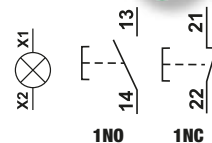
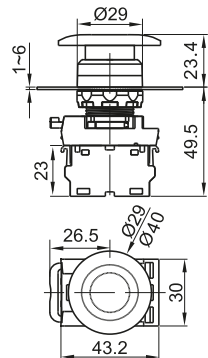
IP65

NC  
NO

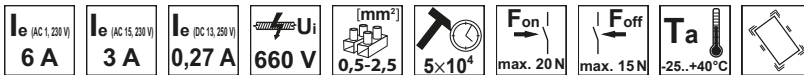
NYG3-MBK	—	1 × NO
NYG3-MG	→	1 × NO
NYG3-MY	→	1 × NO
NYG3-MB	→	1 × NO
NYG3-MR	→	1 × NC
NYG3-MLG	→	1 × NO
NYG3-MLY	→	1 × NO
NYG3-MLB	→	1 × NO
NYG3-MLR	→	1 × NC

page K/32

Ba9s



## Dugme za opasnost, blokirano



**TRACON**

IP 65

IP65

NC  
NO

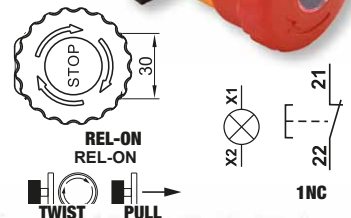
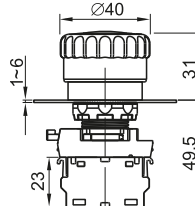
NYG3-ETR	—	1 × NC
NYG3-ETLR	STOP	1 × NC

page K/32

Ba9s

**RELEVANT STANDARD EN 60947-1**

**RELEVANT STANDARD EN 60947-5-1**



## Dvostruko, UKL-ISK tipkalo

Ie (AC 1, 230 V)  
**6 A**

Ie (AC 15, 230 V)  
**3 A**

Ie (DC 13, 250 V)  
**0,27 A**

Ui  
**660 V**

[mm<sup>2</sup>]  
**0,5-2,5**

$\times 10^6$

Fon I  
**max. 20 N**

Ta  
**-25...+40°C**

22 mm

22 mm



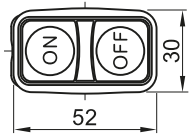
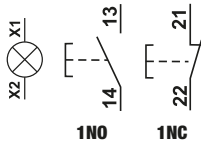
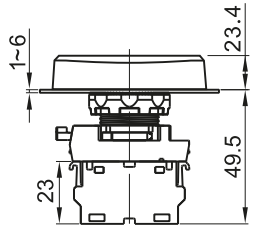
Piktogrami

**K/O**



TRACON			IP 65		IP65		NC NO	
NYG3-D								1×NO+1×NC
NYG3-D1	I	O						1×NO+1×NC
NYG3-D2	ON	OFF						1×NO+1×NC
NYG3-DL								1×NO+1×NC
NYG3-DL1	I	O						1×NO+1×NC
NYG3-DL2	ON	OFF						1×NO+1×NC

page K/32



RELEVANT STANDARD  
**EN 60947-1**

RELEVANT STANDARD  
**EN 60947-5-1**

## Sklopka s ručicom

Ie (AC 1, 230 V)  
**6 A**

Ie (AC 15, 230 V)  
**3 A**

Ie (DC 13, 250 V)  
**0,27 A**

Ui  
**660 V**

[mm<sup>2</sup>]  
**0,5-2,5**

$30 \times 10^4$

Ta  
**-25...+40°C**

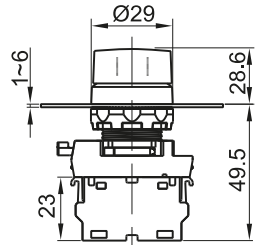
22 mm

22 mm



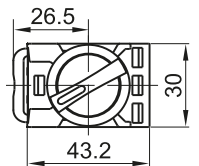
TRACON			IP 65		IP65		NC NO	
Obična	NYK3-S21BK	1 2						1×NO+1×NC
	NYK3-S31BK	1 0 2						2 × NO
	NYK3-S24BK	1 2						1×NO+1×NC
S oprugom	NYK3-S32BK	1 2						2 × NO
	NYK3-S33BK	1 2						2 × NO
	NYK3-S34BK	1 2						2 × NO

page K/32

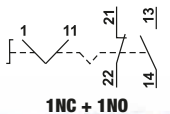


RELEVANT STANDARD  
**EN 60947-1**

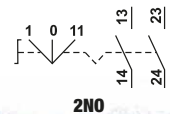
RELEVANT STANDARD  
**EN 60947-5-1**



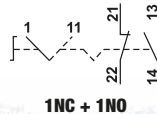
Obična s 2 pozicije



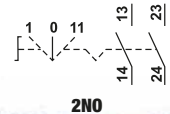
Obična s 3 pozicije



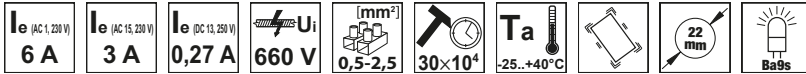
S povratnom oprugom i 2 pozicije



S povratnom oprugom i 3 pozicije

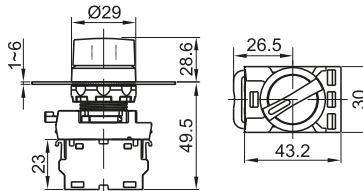
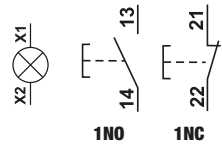
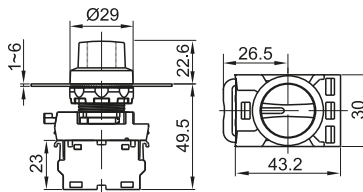


## Sklopka sa svjetlećom ručicom

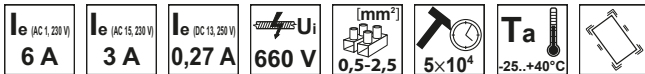


TRACON		
NYK3-SL21R		1×NO+1×NC
NYK3-SL21G		1×NO+1×NC
NYK3-SL21Y		1×NO+1×NC
NYK3-SL21B		1×NO+1×NC
NYK3-SL24R		1×NO+1×NC
NYK3-SL24G		1×NO+1×NC
NYK3-SL24Y		1×NO+1×NC
NYK3-SL24B		1×NO+1×NC
NYK3-SL31R		1×NO+1×NC
NYK3-SL31G		1×NO+1×NC
NYK3-SL31Y		1×NO+1×NC
NYK3-SL31B		1×NO+1×NC
NYK3-SL34R		1×NO+1×NC
NYK3-SL34G		1×NO+1×NC
NYK3-SL34Y		1×NO+1×NC
NYK3-SL34B		1×NO+1×NC

page  
K/32



## Sklopka s ključem

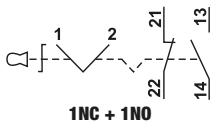


TRACON		
Obična	NYK3-K21	1×NO+1×NC
	NYK3-K31	1×NO+1×NC
S	NYK3-K24	1×NO+1×NC
oprugom	NYK3-K34	1×NO+1×NC

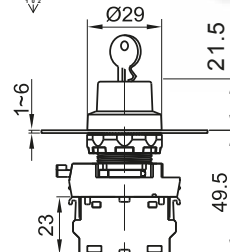
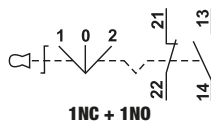
page  
K/32



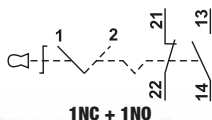
Obična s 2 pozicije



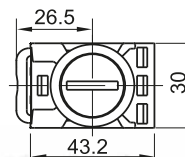
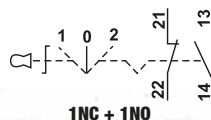
Obična s 3 pozicije



S povratnom oprugom i 2 pozicije



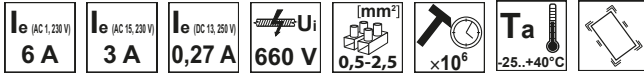
S povratnom oprugom i 3 pozicije



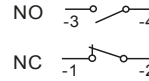
RELEVANT STANDARD  
EN 60947-1  
EN 60947-5-1



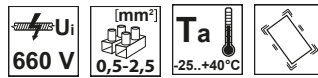
## Kontaktna jedinica za NYG(K)3 seriju



TRACON		
NYG3-CE1		1 x NO
NYG3-CE2		1 x NC



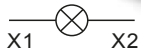
## Svjetleća jedinica za NYG(K)3 seriju



TRACON		
NYG3-SOC		Ba9s



K/44



## Kućiste

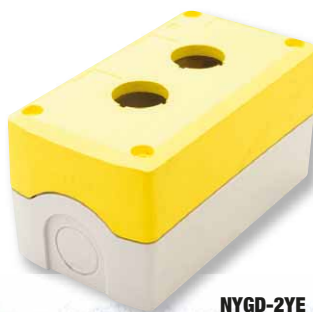


TRACON		
		L x W x H (mm)
NYGD-1GR		73 x 71 x 65.5
NYGD-1YE		73 x 71 x 65.5
NYGD-2GR		130 x 71 x 65.5
NYGD-2YE		130 x 71 x 65.5
NYGD-3GR		170 x 71 x 65.5
NYGD-3YE		170 x 71 x 65.5

TRACON		
		L x W x H (mm)
NYGD-4GR		210 x 71 x 65.5
NYGD-4YE		210 x 71 x 65.5
NYGD-5GR		250 x 71 x 65.5
NYGD-5YE		250 x 71 x 65.5
NYGD-6GR		290 x 71 x 65.5
NYGD-6YE		290 x 71 x 65.5



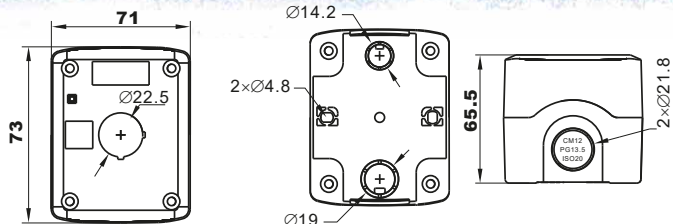
NYGD-1GR



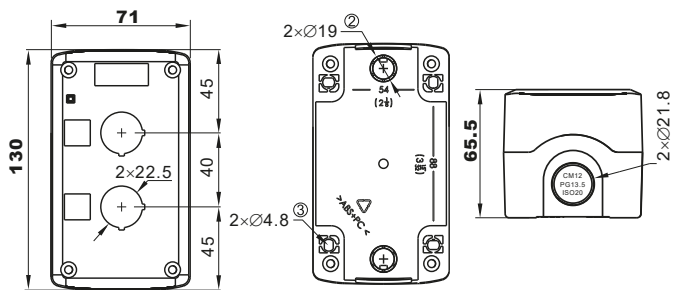
NYGD-2YE



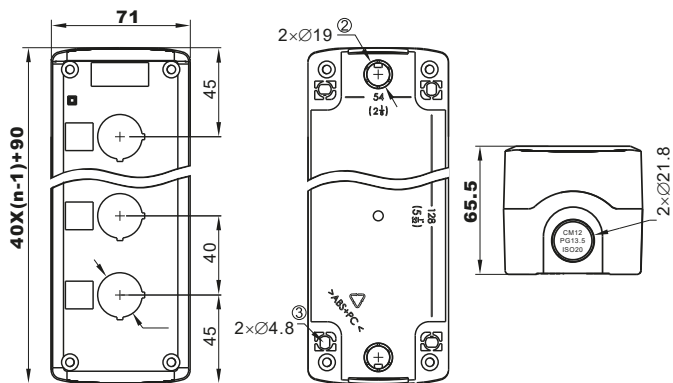
NYGD-3GR



**NYGD-4YE**




**NYGD-5GR**



**NYGD-6YE**



## Dopunski dijelovi

TRACON		
<b>NYG3-CAP</b>	Zaštitna kapa, d=22mm; h=16mm; SILICA GEL	
<b>NYG3-CAPH</b>	Zaštitna kapa, d=22mm; h=22mm; SILICA GEL	
<b>NYG3-LHB</b>	Natpisna ploča (postavljanje odostraga), 25×10mm; ABS	
<b>NYG3-LHBH</b>	Natpisna ploča (postavljanje odostraga), 25×17mm; ABS	
<b>NYG3-LHS</b>	Natpisna ploča (umetanje s bočne strane, 25×10mm; ABS	
<b>NYG3-LHSH</b>	Natpisna ploča (umetanje s bočne strane, 25×17mm; ABS	
<b>NYG3-BLP</b>	Slijepi čep, d=22mm; ABS	
<b>NYGR25/22</b>	Redukcijski prsten, D=25/d=22mm; ABS	
<b>NYGR30/22</b>	Radukcijski prsten s D=30 mm na d=22 mm (1 par)	
<b>NYGR38/22</b>	Radukcijski prsten s D=38 mm na d=22 mm (1 par)	
<b>NYG3-SCAP</b>	Kapa za plombiranje, D=30mm/d=22mm; POLYCARBONATE	
<b>NYG3-LCAP</b>	Kapa za lokotiranje, D=50mm/d=22mm; POLYCARBONATE	
<b>NYG3-ES60</b>	EMERGENCY STOP ploča, d=60mm; ABS	
<b>NYG3-ES90</b>	EMERGENCY STOP ploča, d=90mm; ABS	
<b>NYG3-P30</b>	Zaštitni ovratnik, kružni, d=30; ABS	
<b>NYG3-PH30</b>	Zaštitni ovratnik, nazubljeni, d=30; ABS	
<b>NYG3-P60</b>	Zaštitni ovratnik, kružni, d=60mm; ABS	
<b>NYGD-FR</b>	Pričvrtni prsten za NYGD-... kućišta, d=22mm; ABS	
<b>NYG3-ES60H</b>	EMERGENCY STOP ploča, d=60mm, h=8mm, ABS	
<b>NYG3-PH65</b>	Zaštitni ovratnik, zakrivljeni, W=65mm, H=80mm, D=38mm, ABS	



NYG3-CAP



NYG3-LH



NYG3-BLP



NYGR25/22



NYGD-FR



NYG3-SCAP

NYG3-LCAP

NYG3-ES..

NYP3-P..

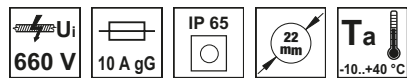
NYG3-PH30














NYG3-PH65

NYGR3..



## Voltmetri, ampermetri, zvučni indikatori



TRACON			<b>Um</b>	<b>Im</b>		
<b>NYG3-VR</b>		LED	24-500 V AC	-	-	
<b>NYG3-VG</b>		LED	24-500 V AC	-	-	
<b>NYG3-VY</b>		LED	24-500 V AC	-	-	
<b>NYG3-AR</b>		LED	-	1-100 A	-	
<b>NYG3-AG</b>		LED	-	1-100 A	-	
<b>NYG3-AY</b>		LED	-	1-100 A	-	
<b>NYG3-BFR230</b>	-	LED, blink	230 V AC	-	✓	
<b>NYG3-BFR24</b>	-	LED, blink	24 V AC/DC	-	✓	



NYG3-AR

NYG3-VR

NYG3-BFR..

NYG3-AG

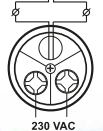
NYG3-VG

NYG3-AY

NYG3-VY



CT



230 VAC

## Svjetleći stupovi

$U_i$   
660 V

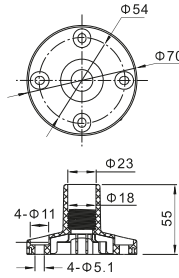
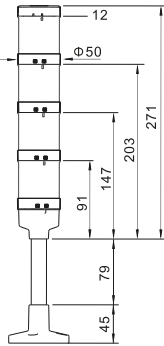
$T_a$   
-20...+50°C

10 A gG

**IP 65**

**SMD LED**

TRACON	$U_m$		
NYG3-50RYG	AC 230 V		
NYG3-50RYGB	AC 230 V		
NYG3-50RYGBW	AC 230 V		
NYG3-50RYGM	AC/DC 24 V		
NYG3-50RYGBM	AC/DC 24 V		
NYG3-50RYGBWM	AC/DC 24 V		



NYG3-50RYG



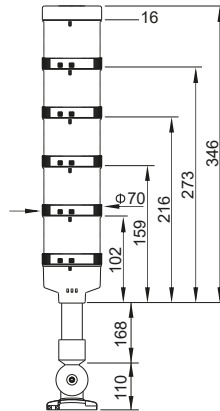
NYG3-50RYGB



NYG3-50RYGBW

## Baza za LED signalni element

TRACON	$U_m$		
NYG3-70KITAC230	230V AC		80 dB
NYG3-70230R	230V AC		—
NYG3-70230Y	230V AC		—
NYG3-70230G	230V AC		—
NYG3-70230W	230V AC		—
NYG3-70230B	230V AC		—
NYG3-70KITACDC24	24V AC/DC		80 dB
NYG3-7024R	24V AC/DC		—
NYG3-7024Y	24V AC/DC		—
NYG3-7024G	24V AC/DC		—
NYG3-7024W	24V AC/DC		—
NYG3-7024B	24V AC/DC		—

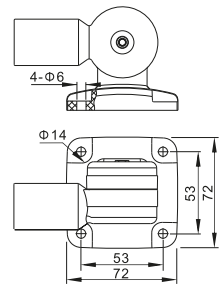


$U_i$   
660 V

$T_a$   
-20...+50°C

10 A gG

**IP 65**



NYG3-70KITAC230,  
NYG3-70KITACDC24



NYG3-70230R,  
NYG3-7024R



NYG3-70230Y,  
NYG3-7024Y



NYG3-70230G,  
NYG3-7024G

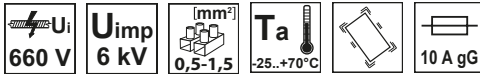


NYG3-70230W,  
NYG3-7024W



NYG3-70230B,  
NYG3-7024B

## Signalne svjetiljke s LED



Promjer: 16 mm

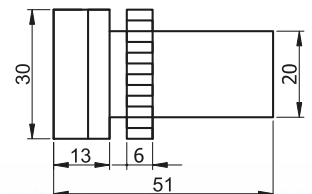
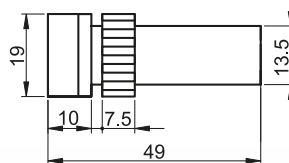
TRACON		
IP 65		Um
LJL16-RA		12 V AC/DC
LJL16-RC		24 V AC/DC
LJL16-RD		48 V AC/DC
LJL16-RE		230 V AC/DC
LJL16-RF		400 V AC
LJL16-GA		12 V AC/DC
LJL16-GC		24 V AC/DC
LJL16-GD		48 V AC/DC
LJL16-GE		230 V AC/DC
LJL16-GF		400 V AC
LJL16-YA		12 V AC/DC
LJL16-YC		24 V AC/DC
LJL16-YD		48 V AC/DC
LJL16-YE		230 V AC/DC
LJL16-YF		400 V AC
LJL16-WA		12 V AC/DC
LJL16-WC		24 V AC/DC
LJL16-WD		48 V AC/DC
LJL16-WE		230 V AC/DC
LJL16-WF		400 V AC
LJL16-BA		12 V AC/DC
LJL16-BC		24 V AC/DC
LJL16-BD		48 V AC/DC
LJL16-BE		230 V AC/DC
LJL16-BF		400 V AC

Promjer: 22 mm

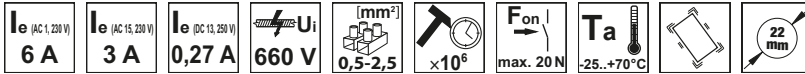
TRACON			
IP 65		Um	IP44
LJL22-RA		12 V AC/DC	
LJL22-RC		24 V AC/DC	
LJL22-RD		48 V AC/DC	
LJL22-RE		230 V AC/DC	
LJL22-RF		400 V AC	
LJL22-GA		12 V AC/DC	
LJL22-GC		24 V AC/DC	
LJL22-GD		48 V AC/DC	
LJL22-GE		230 V AC/DC	
LJL22-GF		400 V AC	
LJL22-YA		12 V AC/DC	
LJL22-YC		24 V AC/DC	
LJL22-YD		48 V AC/DC	
LJL22-YE		230 V AC/DC	
LJL22-YF		400 V AC	
LJL22-WA		12 V AC/DC	
LJL22-WC		24 V AC/DC	
LJL22-WD		48 V AC/DC	
LJL22-WE		230 V AC/DC	
LJL22-WF		400 V AC	
LJL22-BA		12 V AC/DC	
LJL22-BC		24 V AC/DC	
LJL22-BD		48 V AC/DC	
LJL22-BE		230 V AC/DC	
LJL22-BF		400 V AC	

NYGD-1GR

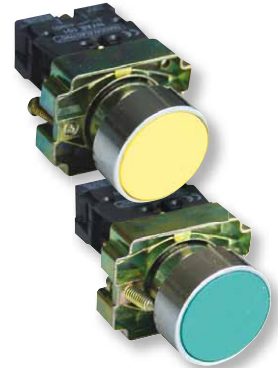
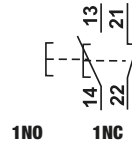
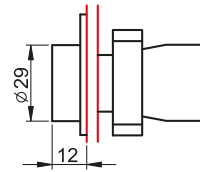
page  
K/32



## Jednostavna tipkala



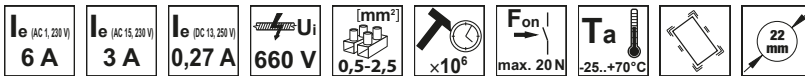
TRACON		IP 42		IP 65	NC	NO
NYGBA21	NYGBA21T			page K/32	1 × NO	
NYGBA31Z	NYGBA31ZT				1 × NO	
NYGBA51S	NYGBA51ST				1 × NO	
NYGBA61K	NYGBA61KT				1 × NO	
NYGBA42P	NYGBA42PT				1 × NC	



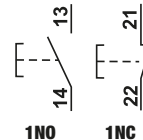
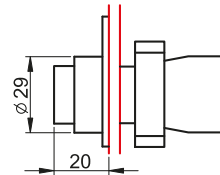
RELEVANT STANDARD  
EN 60947-1

RELEVANT STANDARD  
EN 60947-5-1

## Izdignuta tipkala



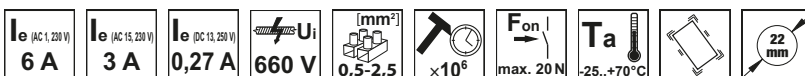
TRACON		IP 42		IP 65	NC	NO
NYGBL21	NYGBL21T			page K/32	1 × NO	
NYGBL31Z	NYGBL31ZT				1 × NO	
NYGBL51S	NYGBL51ST				1 × NO	
NYGBL61K	NYGBL61KT				1 × NO	
NYGBL42P	NYGBL42PT				1 × NC	



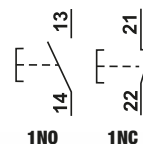
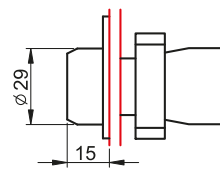
RELEVANT STANDARD  
EN 60947-1

RELEVANT STANDARD  
EN 60947-5-1

## Tipkala s gumenom zaštitom



TRACON		IP 55		IP 65	NC	NO
NYGBP21	NYGBP21T			page K/32	1 × NO	
NYGBP31Z	NYGBP31ZT				1 × NO	
NYGBP51S	NYGBP51ST				1 × NO	
NYGBP61K	NYGBP61KT				1 × NO	
NYGBP42P	NYGBP42PT				1 × NC	



RELEVANT STANDARD  
EN 60947-1

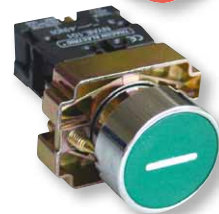
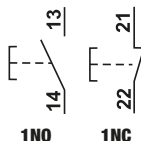
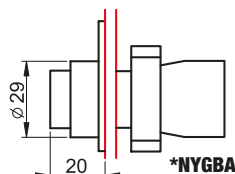
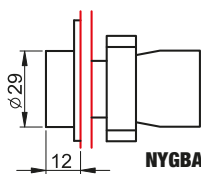
RELEVANT STANDARD  
EN 60947-5-1

## Označena tipkala

$I_e$ (AC 1, 230 V) <b>6 A</b>	$I_e$ (AC 16, 230 V) <b>3 A</b>	$I_e$ (DC 18, 250 V) <b>0,27 A</b>	$U_i$ <b>660 V</b>	$[mm^2]$ <b>0,5-2,5</b>	$\times 10^6$	Fon I max. 20 N	Ta -25...+70°C				<b>K/0</b>
-----------------------------------	------------------------------------	---------------------------------------	-----------------------	----------------------------	---------------	--------------------	-------------------	--	--	--	------------

TRACON						
<b>NYGBA3351</b>	<b>NYGBA3351T</b>				<b>NYGD-1GR</b>	1 x NO
<b>NYGBA3341</b>	<b>NYGBA3341T</b>					1 x NO
<b>NYGBA3311Z</b>	<b>NYGBA3311ZT</b>					1 x NO
<b>NYGBA4222P</b>	<b>NYGBA4222PT</b>					1 x NC
<b>NYGBA4322P*</b>	<b>NYGBA4322PT*</b>					1 x NC

\* Izbočena izvedba



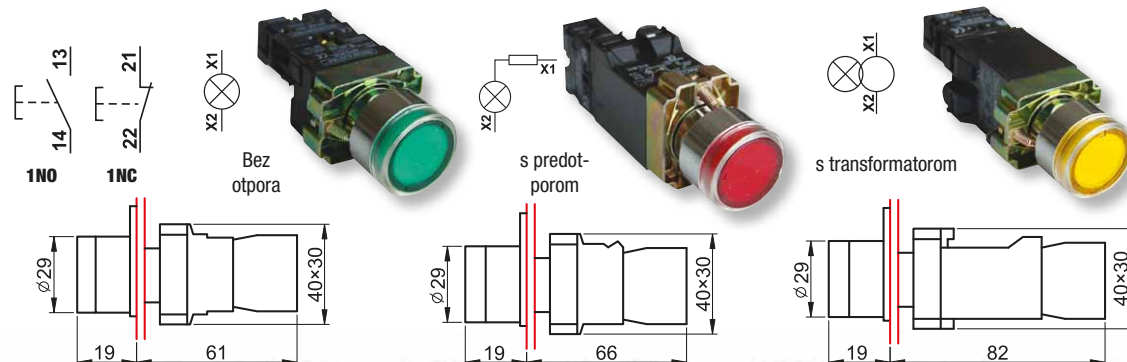
## Svjetleća tipkala (Ba9s)

TRACON						$U_m$	
	<b>NYGBW33Z</b>	-		<b>NYGD-1GR</b>	1 x NO	max. 400 V	NYGI230*
	<b>NYGBW33S</b>	<b>NYGBW33ST</b>			1 x NO	max. 400 V	NYGI230*
	<b>NYGBW33K</b>	<b>NYGBW33KT</b>			1 x NO	max. 400 V	NYGI230*
	<b>NYGBW33P</b>	<b>NYGBW33PT</b>			1 x NC	max. 400 V	NYGI230*
	<b>NYGBW3371Z</b>	<b>NYGBW3371ZT</b>		<b>NYGD-1GR</b>	1 x NO	230-240 V	NYGI130**
	<b>NYGBW3571S</b>	<b>NYGBW3571ST</b>			1 x NO	230-240 V	NYGI130**
	<b>NYGBW3471P</b>	<b>NYGBW3471PT</b>		<b>NYGD-1GR</b>	1 x NC	230-240 V	NYGI130**
	<b>NYGBW3341Z</b>	-			1 x NO	230-240 V	NYGI6**
	<b>NYGBW3541S</b>	-		1 x NO	230-240 V	NYGI6**	
	<b>NYGBW3441P</b>	-		1 x NC	230-240 V	NYGI6**	
	<b>NYGBW3351Z</b>	-		1 x NO	400 V	NYGI6**	
	<b>NYGBW3551S</b>	-		1 x NO	400 V	NYGI6**	
	<b>NYGBW3451P</b>	-		1 x NC	400 V	NYGI6**	

\* Žarulju treba izabrati u ovisnosti od pogonskog napona

Signalne svjetiljke isporučujemo bez žarulja.

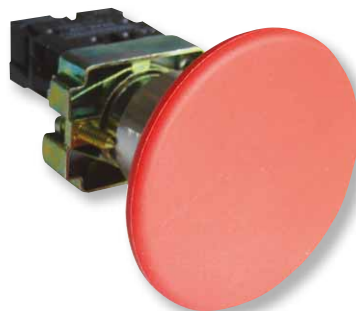
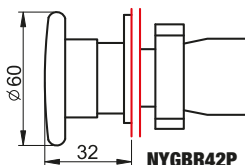
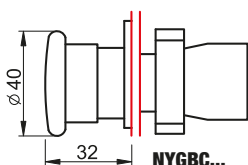
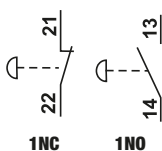
\*\* Pogonski napon za žarulje u signalnim svjetilkama koje su opremljene predspojnom napravom iznosi 130 V, a u izvedbama s transformatorom 6 V.



## Gljivasta tipkala

<b>I<sub>e</sub></b> (AC 1, 230 V) <b>6 A</b>	<b>I<sub>e</sub></b> (AC 15, 230 V) <b>3 A</b>	<b>I<sub>e</sub></b> (DC 13, 250 V) <b>0,27 A</b>	<b>U<sub>i</sub></b> <b>660 V</b>	<b>[mm<sup>2</sup>]</b> <b>0,5-2,5</b>	<b>×10<sup>6</sup></b>	<b>F<sub>on</sub></b>   <b>max. 20 N</b>	<b>T<sub>a</sub></b> <b>-25...+70°C</b>				<b>K/0</b>
--	---	--	--------------------------------------	---	------------------------	---	--	--	--	--	------------

TRACON									
<b>NYGBC21</b>	<b>NYGBC21T</b>	-							
<b>NYGBC31Z</b>	<b>NYGBC31ZT</b>	-							
<b>NYGBC51S</b>	<b>NYGBC51ST</b>	-							
<b>NYGBC61K</b>	<b>NYGBC61KT</b>	-							
<b>NYGBC42P</b>	<b>NYGBC42PT</b>	<b>NYGBC42PTS</b>							
<b>NYGBR42P</b>	<b>NYGBR42PT</b>	<b>NYGBR42PTS</b>							
							<b>NYGD-1GR</b>	1 × NO	
							<b>page K/32</b>	1 × NO	40 mm
							<b>NYGD-1YE</b>	1 × NC	
							<b>page K/32</b>	1 × NC	60 mm



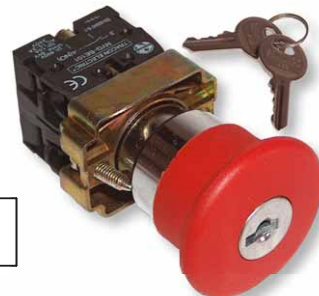
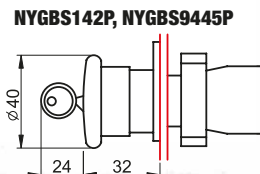
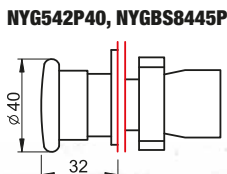
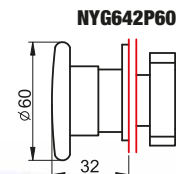
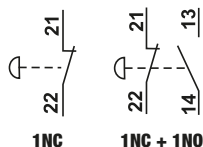
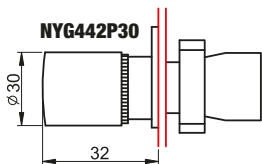
RELEVANT STANDARD  
**EN 60947-1**

RELEVANT STANDARD  
**EN 60947-5-1**

## Gljivasta tipkala na zaključavanje

<b>I<sub>e</sub></b> (AC 1, 230 V) <b>6 A</b>	<b>I<sub>e</sub></b> (AC 15, 230 V) <b>3 A</b>	<b>I<sub>e</sub></b> (DC 13, 250 V) <b>0,27 A</b>	<b>U<sub>i</sub></b> <b>660 V</b>	<b>[mm<sup>2</sup>]</b> <b>0,5-2,5</b>	<b>×10<sup>6</sup></b>	<b>F<sub>on</sub></b>   <b>max. 20 N</b>	<b>F<sub>off</sub></b>   <b>max. 15 N</b>	<b>T<sub>a</sub></b> <b>-25...+70°C</b>			<b>K/0</b>
--	---	--	--------------------------------------	---	------------------------	---	--	--	--	--	------------

TRACON									
<b>NYG442P30</b>	<b>NYG442P30T</b>	<b>NYG442P30TS</b>							
<b>NYG542P40</b>	<b>NYG542P40T</b>	<b>NYG542P40TS</b>							
<b>NYG642P60</b>	<b>NYG642P60T</b>	<b>NYG642P60TS</b>							
<b>NYGBS8445P</b>	<b>NYGBS8445PT</b>	<b>NYGBS8445PTS</b>							
<b>NYGBS142P</b>	<b>NYGBS142PT</b>	<b>NYGBS142PTS</b>							
<b>NYGBS9445P</b>	<b>NYGBS9445PT</b>	<b>NYGBS9445PTS</b>							
							<b>NYGD-1GR</b>	1 × NC	30 mm
							<b>NYGD-1YE</b>	1 × NC	40 mm
							<b>page K/32</b>	1 × NC	60 mm
							<b>page K/32</b>	1 × NC+1 × NO	40 mm
							<b>page K/32</b>	1 × NC	40 mm
							<b>page K/32</b>	1 × NC+1 × NO	40 mm



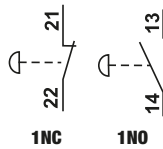
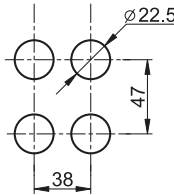
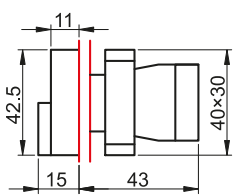


## Dvostruka uklopno-isklopna tipkala

$I_e$ (AC 1, 230 V) <b>6 A</b>	$I_e$ (AC 15, 230 V) <b>3 A</b>	$I_e$ (DC 13, 250 V) <b>0,27 A</b>	$U_i$ <b>660 V</b>	$[mm^2]$ 0,5-2,5	$\times 10^6$	$F_{on}$ max. 20 N	$T_a$ -25...+70°C	22 mm
-----------------------------------	------------------------------------	---------------------------------------	-----------------------	---------------------	---------------	-----------------------	----------------------	-------



TRACON							
<b>NYKK8325</b>	<b>NYKK8325T</b>			<b>NYGD-1GR</b>	1 × NC+1 × NO		
<b>NYKK8425</b>	<b>NYKK8425T</b>	<b>I</b>	<b>O</b>	<b>page K/32</b>	1 × NC+1 × NO		



## Dvostruka uklopno – isklopna tipkala sa signalnom svjetiljkom (Ba9s)

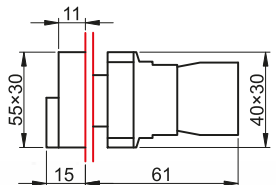
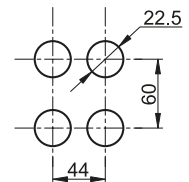
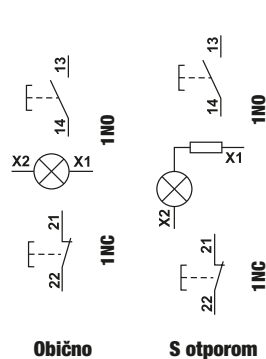
$I_e$ (AC 1, 230 V) <b>6 A</b>	$I_e$ (AC 15, 230 V) <b>3 A</b>	$I_e$ (DC 13, 250 V) <b>0,27 A</b>	$U_i$ <b>660 V</b>	$[mm^2]$ 0,5-2,5	$\times 10^6$	$F_{on}$ max. 20 N	$T_a$ -25...+70°C	22 mm	Ba9s
-----------------------------------	------------------------------------	---------------------------------------	-----------------------	---------------------	---------------	-----------------------	----------------------	-------	------

TRACON								$U_m$	
	<b>NYKK8365</b>	<b>I</b>	<b>O</b>	1 × NC+1 × NO		max. 400 V		NYGI230*	
	<b>NYKK8465</b>	<b>I</b>	<b>O</b>	1 × NC+1 × NO		max. 400 V		NYGI230*	
	<b>NYKK8375</b>	<b>I</b>	<b>O</b>	1 × NC+1 × NO		240 V		NYGI130**	
	<b>NYKK8475</b>	<b>I</b>	<b>O*</b>	1 × NC+1 × NO		240 V		NYGI130**	

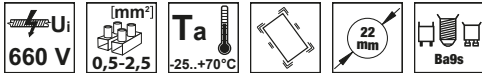
\* Žarulju treba izabrati u ovisnosti od pogonskog napona

\*\* Pogonski napon za žarulje u signalnim svjetiljkama koje su opremljene predspojnom napravom iznosi 130 V.

Signalne svjetiljke isporučujemo bez žarulja.



## Signalne svjetiljke (Ba9s)

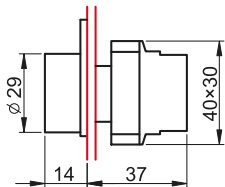


TRACON		Um	IP65	Light bulb icon		
X1	<b>NYGBV61</b>	<b>NYGBV61T</b>		max. 400 V	NYGI230	
X2	<b>NYGBV63Z</b>	<b>NYGBV63ZT</b>		max. 400 V	NYGI230	
	<b>NYGBV65S</b>	<b>NYGBV65ST</b>		max. 400 V	max. 400 V	<b>NYGD-1GR</b>
	<b>NYGBV66K</b>	<b>NYGBV66KT</b>		max. 400 V	max. 400 V	NYGI230
X1	<b>NYGBV73Z</b>	<b>NYGBV73ZT</b>		230-240 V	230-240 V	<b>page K/32</b>
X2	<b>NYGBV74P</b>	<b>NYGBV74PT</b>		230-240 V	230-240 V	NYGI130*
	<b>NYGBV75S</b>	<b>NYGBV75ST</b>		230-240 V	230-240 V	NYGI130*
	<b>NYGBV43Z</b>	<b>NYGBV43ZT</b>		230-240 V	230-240 V	NYGI6*
	<b>NYGBV44P</b>	<b>NYGBV44PT</b>		230-240 V	230-240 V	<b>NYGD-1GR</b>
	<b>NYGBV45S</b>	<b>NYGBV45ST</b>		230-240 V	230-240 V	NYGI6*
X1	<b>NYGBV53Z</b>	<b>NYGBV53ZT</b>		400 V	400 V	NYGI6*
X2	<b>NYGBV55S</b>	<b>NYGBV55ST</b>		400 V	400 V	<b>page K/32</b>
						NYGI6*

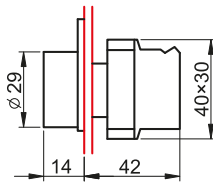
Signalne svjetiljke isporučujemo bez žarulja

Žarulje treba izabrati u ovisnosti od pogonskog napona

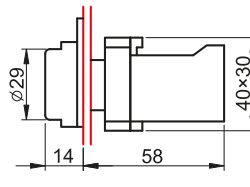
\* Pogonski napon za žarulje u signalnim svjetiljkama koje su opremljene predspojnom napravom iznosi 130 V, a u izvedbama s transformatorom 6 V.



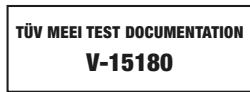
Obična



S otporom



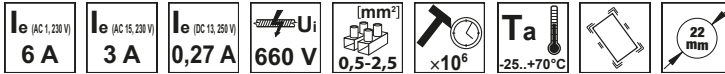
S transformatorom



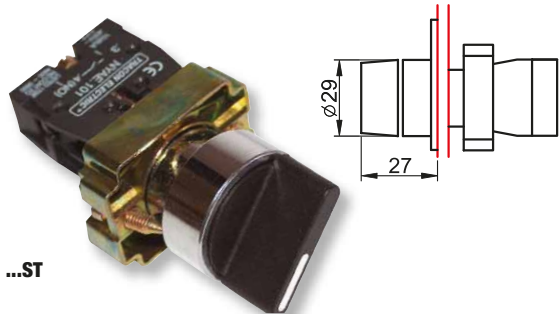
## Sklopnici



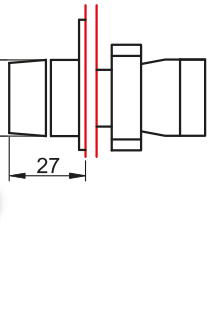
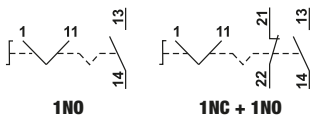
## Sklopke s ručicom



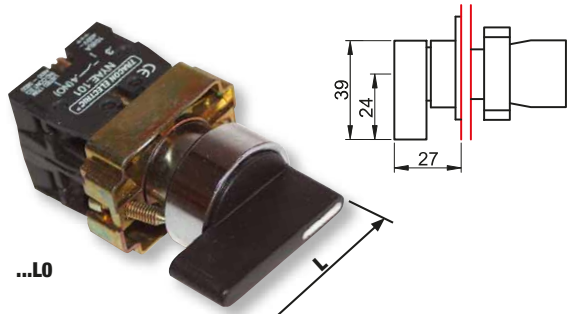
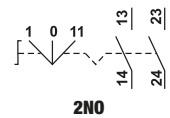
TRACON			IP65	NC NO	L
Obična	NYBD21KST	NYBD21KSTT	NYGD-1GR	1 × NO	29 mm
	-	NYBJ21KLOT		1 × NO	39 mm
	KBD25ST	KBD25STT		1 × NC+1 × NO	29 mm
	KBJ25LO	KBJ25LOT		1 × NC+1 × NO	39 mm
	NYBD33KST	NYBD33KSTT		2 × NO	29 mm
S oprugom	NYBJ33KLO	NYBJ33KLOT	2 × NO	39 mm	
	NYBD41KST	NYBD41KSTT	1 × NO	29 mm	
	NYBJ41KLO	NYBJ41KLOT	1 × NO	39 mm	
	NYBD45KST	NYBD45KSTT	1 × NC+1 × NO	29 mm	
	NYBJ45KLO	NYBJ45KLOT	1 × NC+1 × NO	39 mm	
	NYBD53KST	NYBD53KSTT	2 × NO	29 mm	
	NYBJ53KLO	-	2 × NO	39 mm	



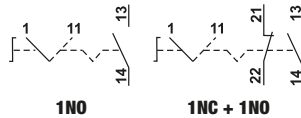
Obična s 2 pozicije



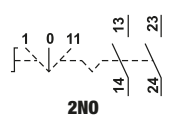
Obična s 3 pozicije



S povratnom oprugom i 2 pozicije



S povratnom oprugom i 3 pozicije



## Sklopke sa svjetlećom ručicom (Ba9s)



<b>I<sub>e</sub></b> (AC 1, 230 V) <b>6 A</b>	<b>I<sub>e</sub></b> (AC 15, 230 V) <b>3 A</b>	<b>I<sub>e</sub></b> (DC 13, 250 V) <b>0,27 A</b>	<b>U<sub>i</sub></b> <b>660 V</b>	<b>[mm<sup>2</sup>]</b> <b>0,5-2,5</b>	<b>×10<sup>6</sup></b>	<b>T<sub>a</sub></b> <b>-25...+70°C</b>	<b>Um</b> <b>max. 400 V</b>	<b>22 mm</b>	<b>Ba9s</b>
--	---	--	--------------------------------------	---	------------------------	--	--------------------------------	--------------	-------------

TRACON		IP 42	IP 42	IP 65	NC	NO
Obična	<b>NYGBK2365Z</b>	<b>NYGBK2365ZT</b>	∇		1 × NC+1 × NO	NYGLZ *
	<b>NYGBK2565S</b>	<b>NYGBK2565ST</b>	∇		1 × NC+1 × NO	NYGLS *
	<b>NYGBK2665K</b>	<b>NYGBK2665KT</b>	∇		1 × NC+1 × NO	NYGLK *
	<b>NYGBK2465P</b>	<b>NYGBK2465PT</b>	∇		1 × NC+1 × NO	NYGLP *
	<b>NYGBK3365Z</b>	<b>NYGBK3365ZT</b>	∇		1 × NC+1 × NO	NYGLZ *
	<b>NYGBK3565S</b>	<b>NYGBK3565ST</b>	∇		1 × NC+1 × NO	NYGLS *
	<b>NYGBK3665K</b>	-	∇		1 × NC+1 × NO	NYGLK *
	<b>NYGBK3465P</b>	<b>NYGBK3465PT</b>	∇		1 × NC+1 × NO	NYGLP *

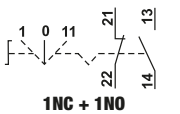


\* Signalne svjetiljke isporučujemo bez žarulja

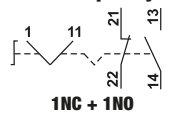
RELEVANT STANDARD  
**EN 60947-1**

RELEVANT STANDARD  
**EN 60947-5-1**

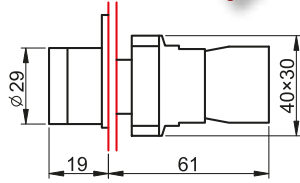
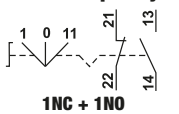
S povratnom oprugom i  
3 pozicije



Obična s 2 pozicije



Obična s 3 pozicije

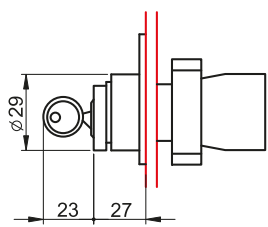


## Sklopke s ključem

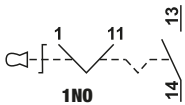


<b>I<sub>e</sub></b> (AC 1, 230 V) <b>6 A</b>	<b>I<sub>e</sub></b> (AC 15, 230 V) <b>3 A</b>	<b>I<sub>e</sub></b> (DC 13, 250 V) <b>0,27 A</b>	<b>U<sub>i</sub></b> <b>660 V</b>	<b>[mm<sup>2</sup>]</b> <b>0,5-2,5</b>	<b>×10<sup>6</sup></b>	<b>T<sub>a</sub></b> <b>-25...+70°C</b>	<b>Um</b> <b>max. 400 V</b>	<b>22 mm</b>
--	---	--	--------------------------------------	---	------------------------	--	--------------------------------	--------------

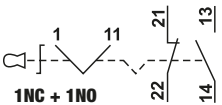
TRACON		IP 42	IP 42	IP 65	NC	NO
Obična	<b>NYBG21KK</b>	<b>NYBG21KKT</b>	∇		1 × NO	∇
	<b>NYBG41KK</b>	<b>NYBG41KKT</b>	∇		1 × NO	∇
	<b>NYBG25KK</b>	<b>NYBG25KKT</b>	∇		1 × NC+1 × NO	∇
	<b>NYBG53KK</b>	<b>NYBG53KKT</b>	∇		2 × NO	∇
S oprugom	<b>NYBG61KK</b>	<b>NYBG61KKT</b>	∇		1 × NO	∇
	<b>NYBG65KK</b>	<b>NYBG65KKT</b>	∇		1 × NC+1 × NO	∇
	<b>NYBG73KK</b>	<b>NYBG73KKT</b>	∇		2 × NO	∇



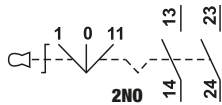
Obična s 2 pozicije



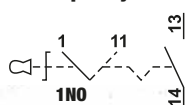
Obična s 2 pozicije



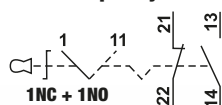
Obična s 3 pozicije



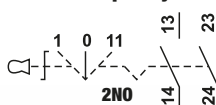
S povratnom oprugom  
i 2 pozicije



S povratnom oprugom  
i 2 pozicije



S povratnom oprugom i  
3 pozicije



## Obične signalne žarulje



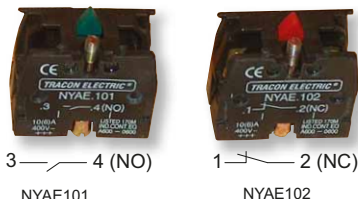
TRACON	U <sub>m</sub>		
NYGI6	6 V AC/DC	1,2 W	Ba9s
NYGI12	12 V AC/DC	2 W	Ba9s
NYGI24	24 V AC/DC	2 W	Ba9s
NYGI48	48 V AC/DC	2 W	Ba9s
NYGI130	130 V AC/DC	2,6 W	Ba9s
NYGI230	230 V AC	glimm	Ba9s

## Signalne žarulje s LED (nova izvedba)



TRACON	U <sub>m</sub>		
NYGL-AC400B	400 V AC		Ba9s
NYGL-AC400G	400 V AC		Ba9s
NYGL-AC400R	400 V AC		Ba9s
NYGL-AC400W	400 V AC		Ba9s
NYGL-AC400Y	400 V AC		Ba9s
NYGL-ACDC230B	230 V AC/DC		Ba9s
NYGL-ACDC230G	230 V AC/DC		Ba9s
NYGL-ACDC230R	230 V AC/DC		Ba9s
NYGL-ACDC230W	230 V AC/DC		Ba9s
NYGL-ACDC230Y	230 V AC/DC		Ba9s
NYGL-ACDC24B	24 V AC/DC		Ba9s
NYGL-ACDC24G	24 V AC/DC		Ba9s
NYGL-ACDC24R	24 V AC/DC		Ba9s
NYGL-ACDC24W	24 V AC/DC		Ba9s
NYGL-ACDC24Y	24 V AC/DC		Ba9s

## Kontaktni elementi



TRACON		
NYAE101	1 × NO	
NYAE102	1 × NC	

Broj kontaktnih elemenata koji se mogu pričvrstiti na osnovu iznosi max. 4 komada.

## Redukcijski prstenovi



TRACON	
NYGR25/22	Redukcijski prsten, D=25/d=22mm; ABS
NYGR30/22	Radukcijski prsten s D=30 mm na d=22 mm (1 par)
NYGR38/22	Radukcijski prsten s D=38 mm na d=22 mm (1 par)

U slučaju zamjene upravljačkih naprava na razvodnim pločama starije izvedbe, koje su postavljene u otvore  $\varnothing 38$  mm, nove naprave možete pričvrstiti s pomoću tzv. redukcijskih prstenova.



**Naša ponuda se brzo i kontinuirano razvija!**  
**Katalog prikazuje stanje u siječnju 2023. godine.**  
**Za aktualne informacije posjetite našu web stranicu!**

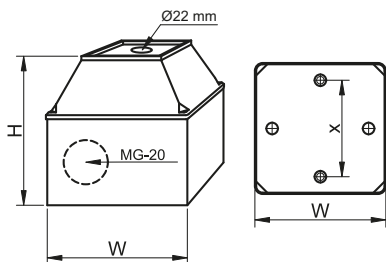
**UČITAJTE ŠIFRU!**

- Pogledajte naše novosti
- Budite u tijeku



**Kućišta**

TRACON		W (mm)	H (mm)	x (mm)		IP..
TK/T2+F2/	+	68	80	44	2 x MG-20	IP 44
TK/T2+F2S/	+	68	80	44	2 x MG-20	IP 44



TÜV MEEI TEST DOCUMENTATION  
**V-15180**

RELEVANT STANDARD  
**EN 60529**



**TDB KUTIJE**

## Sigurnosne sklopke s relejom



Naprave tipa SSTM su namijenjene za sigurno uklopavanje raznih 1- i 3-faznih alatnih strojeva, električnih uređaja. Imaju ugrađenu zaštitu od automatskog pokretanja pri uspostavi napona nakon nestanka s mreže. Jedan relej drži kontakte u zatvorenom stanju i u slučaju nestanka napona otpušta ih. Pri povratku napona stroj se može iznova pokrenuti pritiskom na zeleno dugme.

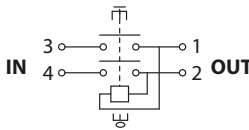
Pozor! Napravu priključite prema shemi koja se nalazi na njoj.



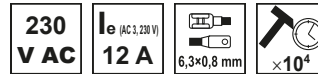
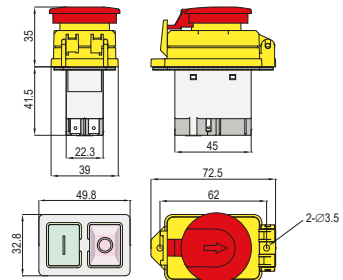
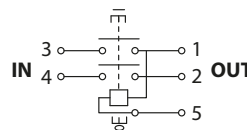
### SSTM-01..



#### TRACON SSTM-01



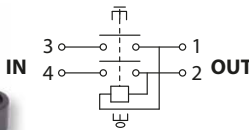
#### TRACON SSTM-015



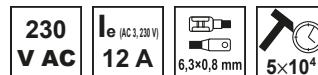
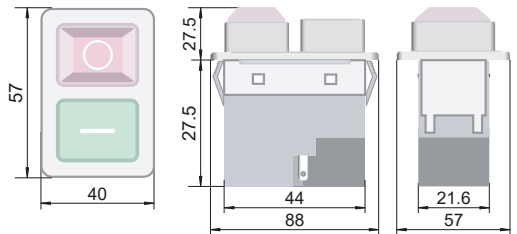
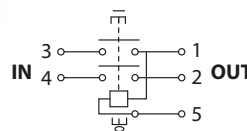
### SSTM-02..



#### TRACON SSTM-02



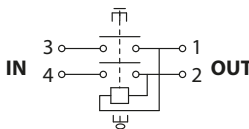
#### TRACON SSTM-025



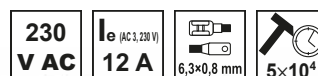
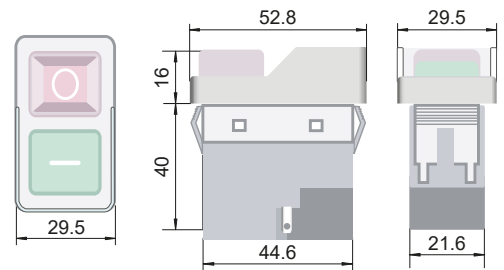
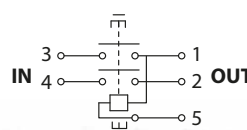
### SSTM-03..



#### TRACON SSTM-03



#### TRACON SSTM-035



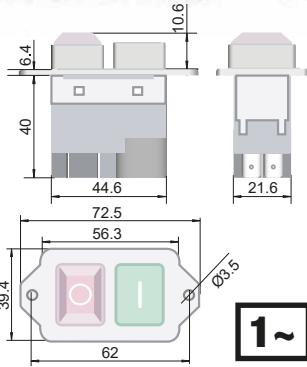
## SSTM-04..

**230 V AC**

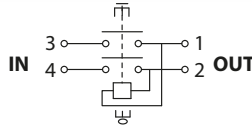
**I<sub>e</sub> (AC 1, 230 V)  
12 A**

**6,3x0,8 mm**

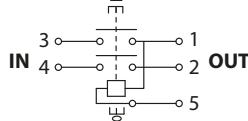
**5x10<sup>4</sup>**



### TRACON SSTM-04



### TRACON SSTM-045



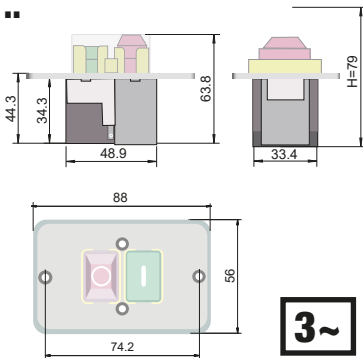
## SSTM-31..

**400 V AC**

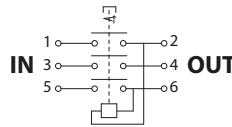
**I<sub>e</sub> (AC 1, 400 V)  
8 A**

**6,3x0,8 mm**

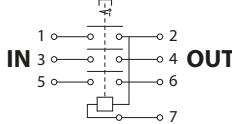
**x10<sup>4</sup>**



### TRACON SSTM-316



### TRACON SSTM-317



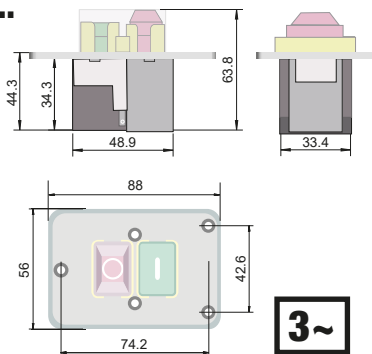
## SSTM-32..

**400 V AC**

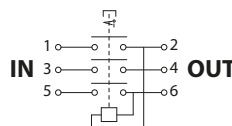
**I<sub>e</sub> (AC 1, 400 V)  
8 A**

**6,3x0,8 mm**

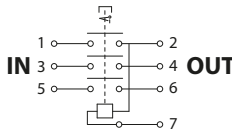
**5x10<sup>4</sup>**



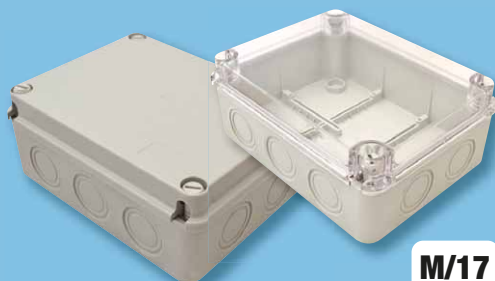
### TRACON SSTM-326



### TRACON SSTM-327



## Kutije za elektroniku



**M/17**

## SSTM-BOX

Namijenjena je za sljedeće tipove:

**SSTM-02, -025**

**SSTM-316, -317**

**SSTM-326, -327**

**113x77x60 mm**



**IP  
42**



**TRACON SSTM-BOX**

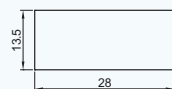
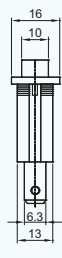
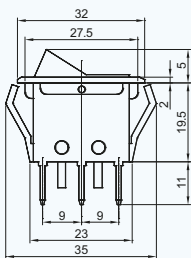


## Sklopke za uređaje tipa TES

<b>U<sub>m</sub></b> max. 250 V	<b>I<sub>e</sub></b> (AC 1, 230 V) <b>16 A</b>	<b>I<sub>e</sub></b> (AC 15, 230 V) <b>6 A</b>	<b>I<sub>e</sub></b> (DC 13, 230 V) <b>0,27 A</b>	<b>U<sub>i</sub></b> <b>660 V</b>	<b>U<sub>imp</sub></b> <b>6 kV</b>	<b>[mm<sup>2</sup>]</b> 0,5-2,5	<b>[h]</b> 5×10 <sup>4</sup>	<b>[h]</b> 15.000	<b>% rH</b> max. 95	<b>T<sub>a</sub></b> -20...+55°C	<b>IP 42</b>	<b>10 A gG</b>
------------------------------------	---	---	--	--------------------------------------	---------------------------------------	------------------------------------	---------------------------------	----------------------	------------------------	-------------------------------------	--------------	----------------

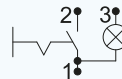
Sklopke za uređaje tipa TES... pogodne su za ugradnju u mjerne i kontrolno-upravljačke uređaje, kućanske aparate i druge električne naprave. Svjetleće sklopke preporučujemo za ugradnju u naprave čije je stanje uključenosti važno označiti. Postavljanje sklopke u odgovarajući otvor postiže se jednim pritiskom. Za spajanje ima stopice standardnih dimenzija 4,8×0,8 mm i 6,3×0,8 mm na koje se mogu spojiti vodiči opremljeni plosnatim natičnim stopicama.

### Sklopka ON-OFF

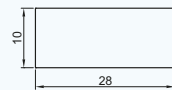
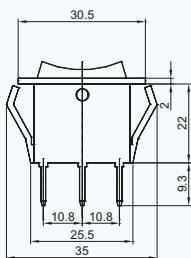


**TRACON**

**TES-11** 6,3 × 0,8 mm 3

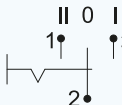


### Sklopka s 0 u srednjem položaju

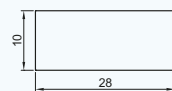
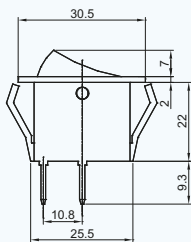


**TRACON**

**TES-12** 6,3 × 0,8 mm **I-0-I** -



### Sklopka ON-OFF

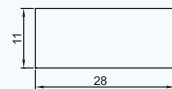
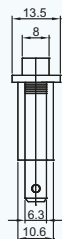
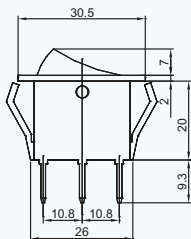


**TRACON**

**TES-13** 6,3 × 0,8 mm **O-I** -

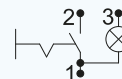


### Sklopka ON-OFF



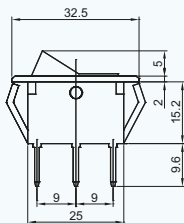
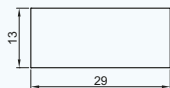
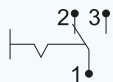
**TRACON**

**TES-21** 6,3 × 0,8 mm ✓

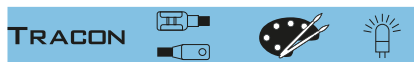
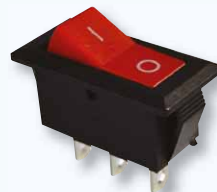




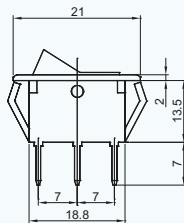
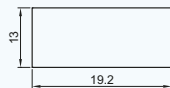
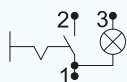
**TES-22** 4,8 × 0,8 mm **0-1** -



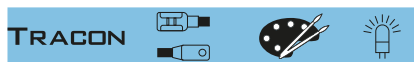
**Preklopna sklopka**



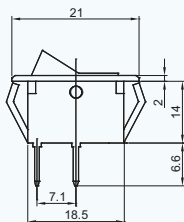
**TES-33** 4,8 × 0,8 mm **0-1** ✓



**Sklopka ON-OFF**



**TES-34** 4,8 × 0,8 mm **0-1** -



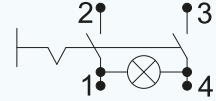
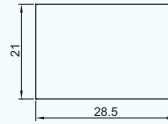
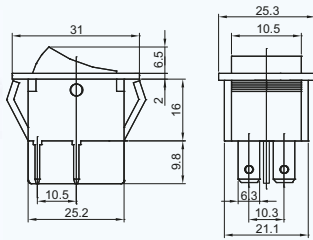
**Sklopka ON-OFF**



## RUČNI INSTRUMENTI



**Dvopolna sklopka ON-OFF**



TRACON

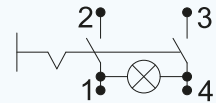
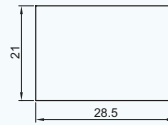
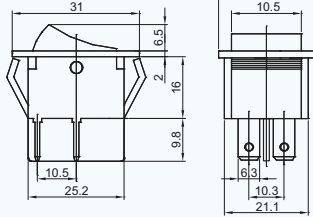


TES-41

6,3 × 0,8 mm

0-1 ✓

**Dvopolna sklopka ON-OFF**



TRACON

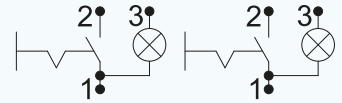
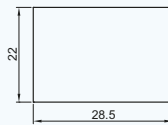
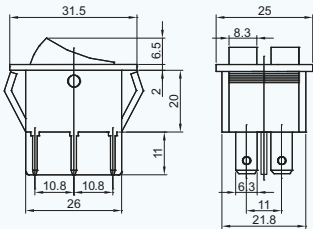


TES-42

6,3 × 0,8 mm

0-1 ✓

**Sklopka ON-OFF**



TRACON

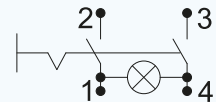
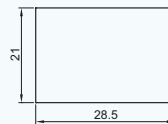
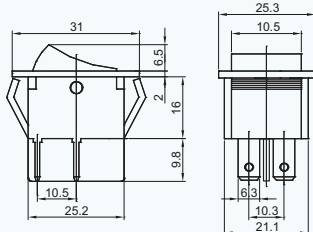


TES-43

6,3 × 0,8 mm

0-1, 0-1 ✓

**Dvopolna sklopka ON-OFF**



TRACON

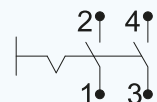
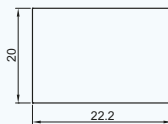
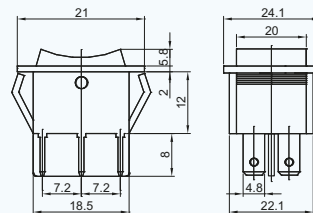


TES-44

6,3 × 0,8 mm

0-1 ✓

**Dvopolna sklopka ON-OFF**



TRACON



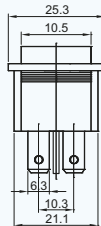
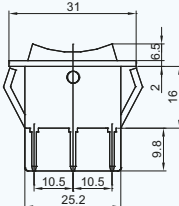
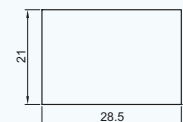
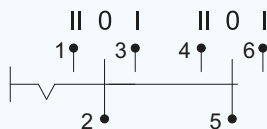
TES-51

4,8 × 0,8 mm

0-1 -



<b>TES-52</b>	6,3 × 0,8 mm	<b>I-0-II</b>	-
<b>TES-52-2</b>	6,3 × 0,8 mm	<b>I-0-II</b>	-

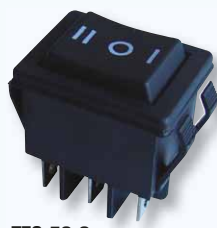


### Dvopolna izborna sklopka

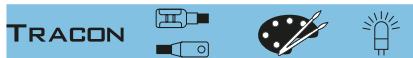
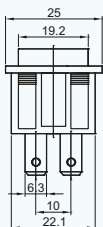
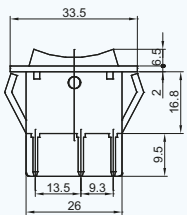
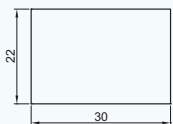


**TES-52**

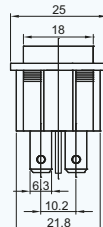
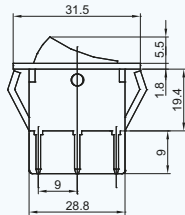
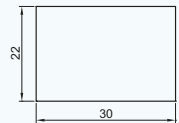
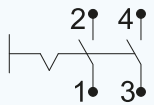
### Dvopolna izborna sklopka (povratna s oprugom)



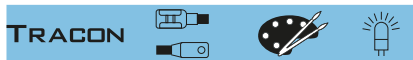
**TES-52-2**



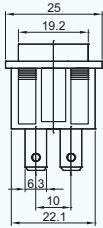
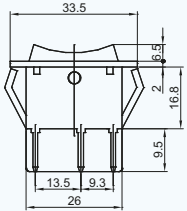
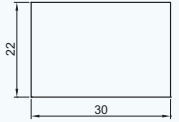
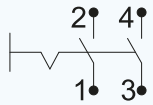
<b>TES-53</b>	6,3 × 0,8 mm	<b>0-I</b>	-
---------------	--------------	------------	---



### Dvopolna sklopka ON-OFF



<b>TES-53-1</b>	6,3 × 0,8 mm	<b>0-I</b>	-
-----------------	--------------	------------	---



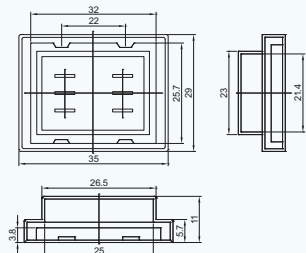
### Dvopolna sklopka ON-OFF (S oprugom)



<b>TES-GB</b>	<b>TES-GB1</b>
---------------	----------------

Namijenjena je za sljedeće tipove:

- |               |               |
|---------------|---------------|
| <b>TES-42</b> | <b>TES-33</b> |
| <b>TES-43</b> | <b>TES-34</b> |
| <b>TES-52</b> |               |
| <b>TES-53</b> |               |



### PVC membrana



**IP55**

**TES-GB**



**IP44**

**TES-GB1**

## Jednofazni odvojni transformatori tipa TVTR

230  
V AC

50/60 Hz



IP 00

IP 20

0,0% rH  
max. 95Ta  
-5...+40 °CE  
+120 °C

Piktogrami

K/O

TRACON	P <sub>n</sub>	U <sub>pr</sub>	U <sub>sec</sub>	P <sub>sec</sub> *	I <sub>sec</sub>
TVTR-50-A	50 VA	230 V	3-6-12-18-24 V	6,25-12,5-25-37,5-50 VA	2,08 A
TVTR-50-B		230 V	6-12-18-24 V	12,5-25-37,5-50 VA	2,08 A
TVTR-50-C		230 V	12-24-42 V	14,2-28,5-50 VA	1,19 A
TVTR-50-D		230 V	24-42-110 V	10-19-50 VA	0,45 A
TVTR-50-F		230 V	24-230 V	5,2-50 VA	0,21 A
TVTR-100-A	100 VA	230 V	3-6-12-18-24 V	12,5-25-50-75-100 VA	4,16 A
TVTR-100-B		230 V	6-12-18-24 V	25-50-75-100 VA	4,16 A
TVTR-100-C		230 V	12-24-42 V	28,5-57,1-100 VA	2,38 A
TVTR-100-D		230 V	24-42-110 V	21,8-38,1-100 VA	0,90 A
TVTR-100-F		230 V	24-230 V	10,4-100 VA	0,43 A
TVTR-150-B	150 VA	230 V	6-12-18-24 V	37,5-75-112,5-150 VA	6,25 A
TVTR-150-C		230 V	12-24-42 V	42,8-85,7-150 VA	3,57 A
TVTR-150-D		230 V	24-42-110 V	32,7-57,2-150 VA	1,36 A
TVTR-150-E		230 V	42-110-230 V	27,3-71,7-150 VA	0,65 A
TVTR-150-F		230 V	24-230 V	15,6-150 VA	0,65 A
TVTR-200-B	200 VA	230 V	6-12-18-24 V	50-100-150-200 VA	8,30 A
TVTR-200-C		230 V	12-24-42 V	57,1-114,2-200 VA	4,76 A
TVTR-200-D		230 V	24-42-110 V	43,6-76,3-200 VA	1,81 A
TVTR-200-E		230 V	42-110-230 V	36,5-95,6-200 VA	0,86 A
TVTR-200-F		230 V	24-230 V	20,8-200 VA	0,86 A

\* u ovisnosti od napona odcjepa sa sekundarnog namota



To su transformatori za odvajanje u kojima su primarni namoti od sekundarnog namota odvojeni osnovnom izolacijom. Namijenjeni su za niskonaponski prijenos snage u pogonskim, signalnim, upravljačkim i ostalim strujnim krugovima, npr. za stvaranje malog pogonskog napona (**FELV**) prema standardizaciji **MSZ HD 60364-4-41**, ili za jednostavno odvajanje jedinog trošila na sekundarnoj strani pri zaštiti električnim odvajanjem. Izrađuju se u jednofaznoj izvedbi, s osam različitih vrijednosti sekundarnog napona (U<sub>sec</sub>=3-6-12-18-24-42-110-230 V).

Udovoljavaju zahtjevima standardizacija **EN 60742** i **EN 61558**. U pogledu zaštite otvorenog su tipa (IP 00), namijenjeni ugradnji, a za priključivanje imaju vijčane stezaljke zaštitnog stupnja IP 20. Tipska snaga im se mijenja između 50 – 630 VA u ovisnosti od izvedbe. Sekundarni namoti su izvedeni odcjepom, i nazivna snaga se postiže pri najvećem naponu sekundara, a pri odcjepima snaga opada u odnosu na smanjivanje napona (vidi u tablici).


RELEVANT STANDARD  
EN 61558-1RELEVANT STANDARD  
EN 61558-2-1ŽIVOT JE LIJEP KAD JE OBOJEN!  
DEKORACIJSKA STOLNA SVJETILJKA

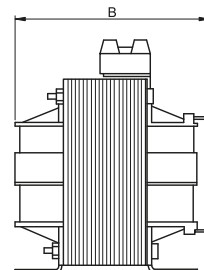
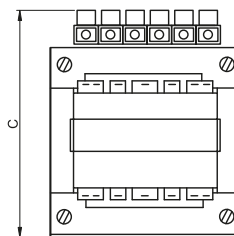
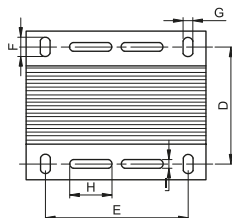
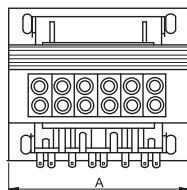
RLV



TRACON	$P_n$	$U_{pr}$	$U_{sec}$	$P_{sec}$ *	$I_{sec}$	
TVTR-250-B	250 VA	230 V	6-12-18-24 V	62,5-125-187,5-250 VA	10,41 A	
TVTR-250-C		230 V	12-24-42 V	71,4-142,8-250 VA	5,95 A	
TVTR-250-D		230 V	24-42-110 V	54,5-95,4-250 VA	2,27 A	
TVTR-250-E		230 V	42-110-230 V	45,6-119,5-250 VA	1,08 A	
TVTR-250-F		230 V	24-230 V	26-250 VA	1,08 A	
TVTR-300-B		300 VA	230 V	6-12-18-24 V	75-150-225-300 VA	12,50 A
TVTR-300-C	230 V		12-24-42 V	85,7-171,4-300 VA	7,14 A	
TVTR-300-D	230 V		24-42-110 V	65,4-114,5-300 VA	2,72 A	
TVTR-300-E	230 V		42-110-230 V	54,7-143,4-300 VA	1,30 A	
TVTR-300-F	230 V		24-230 V	31,3-300 VA	1,30 A	
TVTR-400-B	400 VA		230 V	6-12-18-24 V	100-200-300-400 VA	16,66 A
TVTR-400-C		230 V	12-24-42 V	114,2-228,5-400 VA	9,52 A	
TVTR-400-D		230 V	24-42-110 V	87,2-152,7-400 VA	3,63 A	
TVTR-400-E		230 V	42-110-230 V	73-191,3-400 VA	1,73 A	
TVTR-400-F		230 V	24-230 V	41,7-400 VA	1,73 A	
TVTR-500-C		500 VA	230 V	12-24-42 V	142,8-285,7-500 VA	11,90 A
TVTR-500-D	230 V		24-42-110 V	109-190,9-500 VA	4,54 A	
TVTR-500-E	230 V		42-110-230 V	91,3-239,1-500 VA	2,17 A	
TVTR-500-F	230 V		24-230 V	52,1-500 VA	2,17 A	
TVTR-630-C	630 VA		230 V	12-24-42 V	180-360-630 VA	15 A
TVTR-630-D			230 V	24-42-110 V	137,4-240,5-630 VA	5,72 A
TVTR-630-E		230 V	42-110-230 V	115-301,3-630 VA	5,73 A	
TVTR-630-F		230 V	24-230 V	65,7-630 VA	2,73 A	

\* u ovisnosti od napona odcjepa sa sekundarnog namota

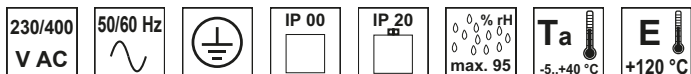
TRACON	A (mm)	B (mm)	C (mm)	D (mm)	E (mm)	F (mm)	G (mm)	H (mm)	I (mm)	
TVTR-50	75	80	77	50	56	10	5,5	28	4	1,2 kg
TVTR-100	85	90	85	59	64	10	5,5	40	5	1,9 kg
TVTR-150	98	90	95	65	84	12	6	40	5	2,6 kg
TVTR-200	98	100	95	74	84	12	6	40	5	3,1 kg
TVTR-250	98	110	95	84	84	12	6	40	5	3,6 kg
TVTR-300	110	110	103	82	90	12	6	-	-	4,6 kg
TVTR-400	123	112	110	84	90	14	7	50	5	5,3 kg
TVTR-500	122	120	107	98	90	14	7	50	5	6,3 kg
TVTR-630	154	115	135	87	122	22	8	50	5	7,2 kg



**POVJERITE NAM VAŠU RASVJETU!**  
PRILAGOĐENA SVJETLOTEHNIČKA PROCJENA

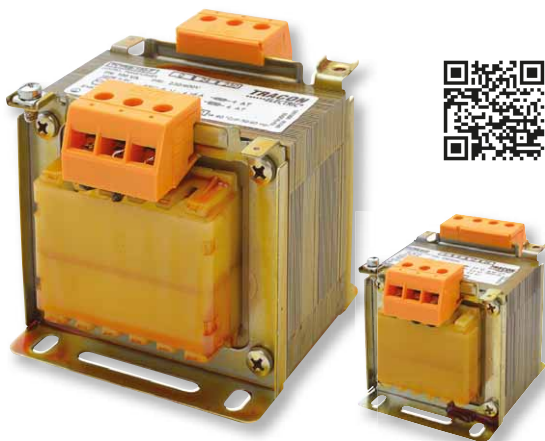


## Jednofazni izolacijski transformatori tipa TVTRB



TRACON	P <sub>n</sub>	U <sub>pr</sub>	U <sub>sec</sub>	P <sub>sec</sub> *	I <sub>sec</sub>
<b>TVTRB-60-A</b>	60 VA	230-400 V	6-12-24 V	15-30-60 VA	2,5 A
<b>TVTRB-60-F</b>		230-400 V	24-230 V	6,2-60 VA	0,26 A
<b>TVTRB-100-A</b>	100 VA	230-400 V	6-12-24 V	25-50-100 VA	4,17 A
<b>TVTRB-100-F</b>		230-400 V	24-230 V	10,4-100 VA	0,43 A
<b>TVTRB-100-0</b>		230 V	42 V	100 VA	2,38 A

\* u ovisnosti od napona sekundara



Ovi transformatori su namijenjeni za izolacijsko odvajanje pri niskona-  
pnom prijenosu snage u pogonskim, signalnim, upravljačkim i ostalim  
strujnim krugovima za stvaranje **sigurnosnog malog napona (SELV)**  
za zaštitu od dodira prema standardizaciji **MSZ HD 60364-4-41**.

Između primarnog i sekundarnog namota je zaštitno odvajanje, i sigurnosni izolacijski transformatori na sekundarnoj strani daju tzv. sigurnosni mali napon manji od 50 V. Izvedbe sa sekundarnim naponom većim od 50 V spadaju u tzv. izolacijske transformatore.

Svi ovi transformatori udovoljavaju zahtjevima standardizacija **EN 60742** i **EN 61558**. U pogledu zaštite otvorenog su tipa (IP 00), namijenjeni ugradnji, a za priključivanje imaju vijčane stezaljke. Tipska snaga im se mijenja između 60 – 600 VA u ovisnosti od izvedbe.

Sekundarni namoti transformatora koji mogu dati više različitih napona izvedeni su odcjepom, i nazivna snaga se postiže pri najvećem naponu sekundara. Pri odcjepima snaga opada u odnosu na smanjivanje napona (vidi u tablici).

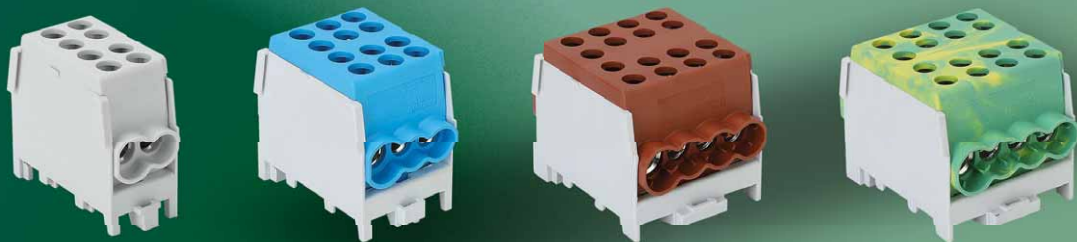
RELEVANT STANDARD  
**EN 61558-1**

RELEVANT STANDARD  
**EN 61558-2-4**

## FLECU




## ODCJEPNE STEZALJKE ZA UZLAZNE VODOVE



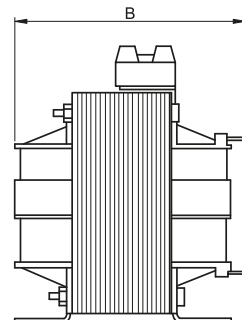
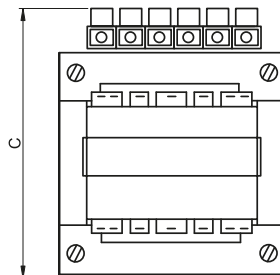
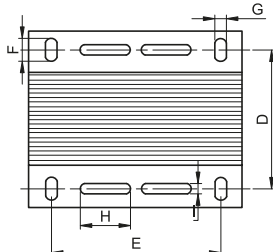
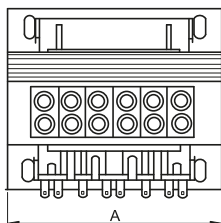
TRACON	$P_n$	$U_{pr}$	$U_{sec}$	$P_{sec}$ *	$I_{sec}$
<b>TVTRB-160-B</b>	160 VA	230-400 V	12-24 V	80-160 VA	6,67 A
<b>TVTRB-160-F</b>		230-400 V	24-230 V	16,7-160 VA	0,70 A
<b>TVTRB-160-M</b>		230 V	12 V	160 VA	13,34 A
<b>TVTRB-250-B</b>	250 VA	230-400 V	12-24 V	125-250 VA	10,42 A
<b>TVTRB-250-F</b>		230-400 V	24-230 V	26-250 VA	1,09 A
<b>TVTRB-400-B</b>		230-400 V	12-24 V	200-400 VA	16,67 A
<b>TVTRB-400-F</b>	400 VA	230-400 V	24-230 V	41,74-400 VA	1,74 A
<b>TVTRB-400-O</b>		230 V	42 V	400 VA	9,52 A
<b>TVTRB-600-B</b>		230-400 V	12-24 V	300-600 VA	25 A
<b>TVTRB-600-F</b>	600 VA	230-400 V	24-230 V	62,6-600 VA	2,61 A
<b>TVTRB-600-O</b>		230 V	42 V	600 VA	14,29 A

\* u ovisnosti od napona sekundara

TRACON	A (mm)	B (mm)	C (mm)	D (mm)	E (mm)	F (mm)	G (mm)	H (mm)	I (mm)	
<b>TVTRB-60</b>	75	90	76	60	56	10	5	28	4	1,5 kg
<b>TVTRB-100</b>	84	89	84	54	64	10	5,5	40	5	2,0 kg
<b>TVTRB-160</b>	96	80	108	70	84	11	5,8	35	3,6	2,4 kg
<b>TVTRB-250</b>	98	98	95	65	84	12	6	40	5	2,7 kg
<b>TVTRB-400</b>	123	115	110	84	90	14	7	50	5	5,3 kg
<b>TVTRB-600</b>	155	135	135	98	122	22	8	50	5	7,7 kg

RELEVANT STANDARD  
**EN 61558-1**

RELEVANT STANDARD  
**EN 61558-2-1**



## ESPD

ODVODNICI  
PRENAPONA

